

CATALOGUE NO. 8635.2
EMBARGOED UNTIL 11.30 A.M. 21 MARCH 1995

TOURIST ACCOMMODATION, VICTORIA, DECEMBER QUARTER 1994

MAIN FEATURES

DECEMBER QUARTER 1994
COMPARED WITH
DECEMBER QUARTER 1993

HOTELS, MOTELS AND GUEST HOUSES

- Rooms available decreased by 1.2 per cent from 30,265 to 29,892 and bed spaces decreased by 0.9 per cent to 82,442.
- Room nights occupied increased by 10.3 per cent to 1,460,935 and the room occupancy rate increased from 47.6 per cent to 53.2 per cent.
- By star grading, the highest room occupancy rate at 77.1 per cent was achieved by five star rated establishments compared with rates of 72.7 per cent for four star establishments and 50.7 per cent for three star establishments.
- Guest nights increased by 9.1 per cent to 2,412,975 and the bed occupancy rate increased from 28.9 per cent to 31.9 per cent.
- Guest arrivals at hotels, motels and guest houses increased by 5.9 per cent to 1,300,321 while the average length of stay increased from 1.8 days to 1.9 days.
- Takings from accommodation increased by 15.0 per cent from \$110.5m to \$127.1m while average takings per room night occupied increased from \$83 to \$87.

HOLIDAY FLATS, UNITS AND HOUSES

- The number of units, etc. available for short-term letting decreased by 1.2 per cent from 3,346 to 3,305 while unit nights occupied increased by 10.6 per cent to 131,457.
- The unit occupancy rate increased from 38.9 per cent to 43.2 per cent.
- Unit lettings decreased from 31,974 to 31,559 while the average length of stay increased from 3.7 days to 4.2 days.
- Accommodation takings increased by 17.8 per cent from \$8.9m to \$10.5m and average takings per unit night occupied increased from \$75 to \$80.

CARAVAN PARKS

- Capacity available increased marginally from 67,177 to 67,213 powered and unpowered sites and cabins, etc. while site nights occupied increased by 2.5 per cent from 2,449,754 to 2,511,669.
- The site occupancy rate rose by 0.8 percentage points to 40.6 per cent.
- Long-term residents occupied 6,466 sites, etc. (9.6 per cent), while 15,190 sites (22.6 per cent) were permanently reserved but only casually occupied by their tenants and an average of 5,645 sites (8.4 per cent) were occupied by other short-term guests.
- Accommodation takings increased by 7.4 per cent from \$19.1m to \$20.5m with average takings per site night occupied unchanged at \$8.

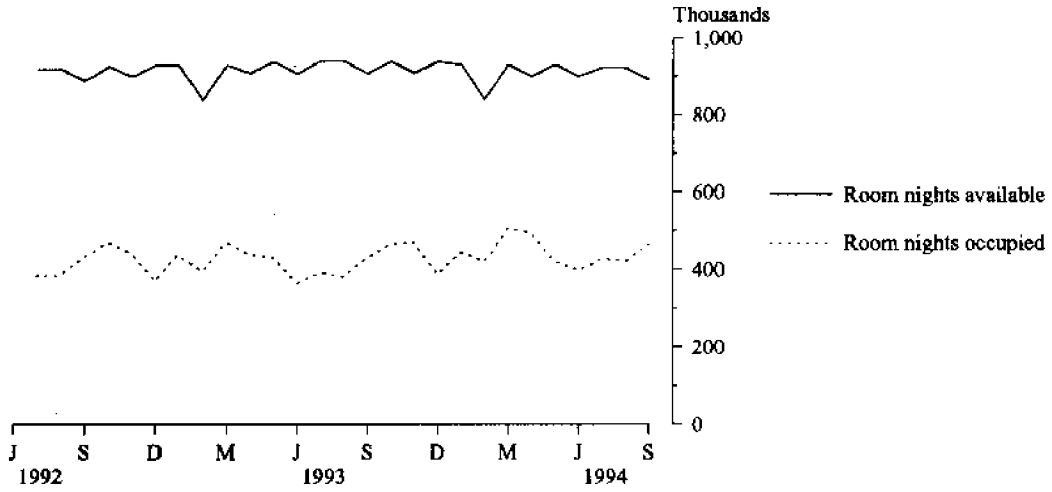
VISITOR HOSTELS

- Bed spaces available increased by 9.7 per cent from 2,576 to 2,825.
- Guest nights occupied rose by 11.0 per cent to 102,937 and the bed occupancy rate increased from 39.1 per cent to 39.6 per cent.
- Guest arrivals increased from 36,713 to 43,267 while the average length of stay decreased from 2.5 days to 2.4 days.
- Accommodation takings rose from \$1.1m to \$1.3m while average takings per guest night increased from \$12 to \$13.

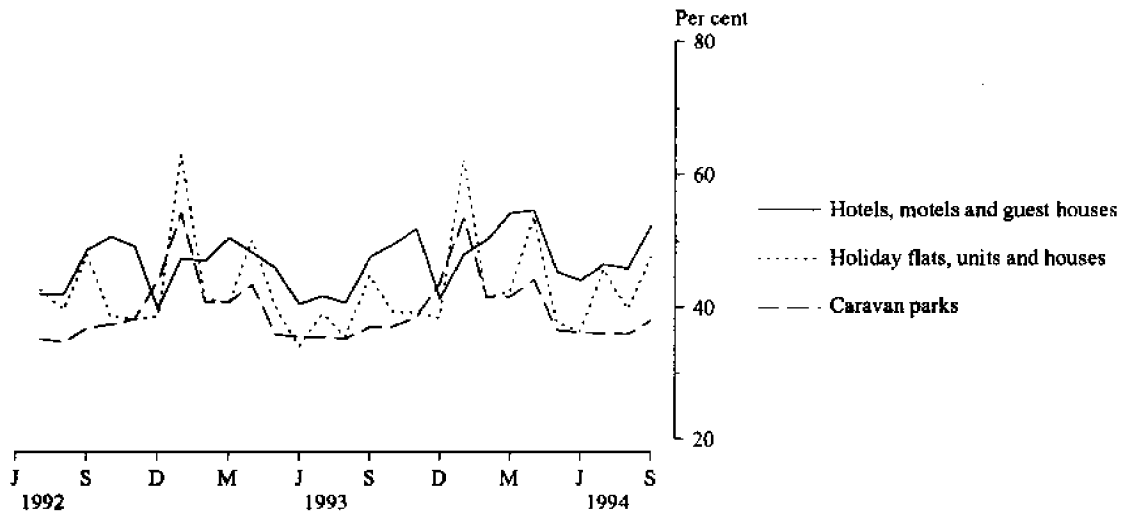
INQUIRIES

- *for further information about statistics in this publication and the availability of related unpublished statistics, contact Greg McNamara on 008 077285 or any ABS office.*
 - *for information about other ABS statistics and services, refer to the back page of this publication.*
- *****

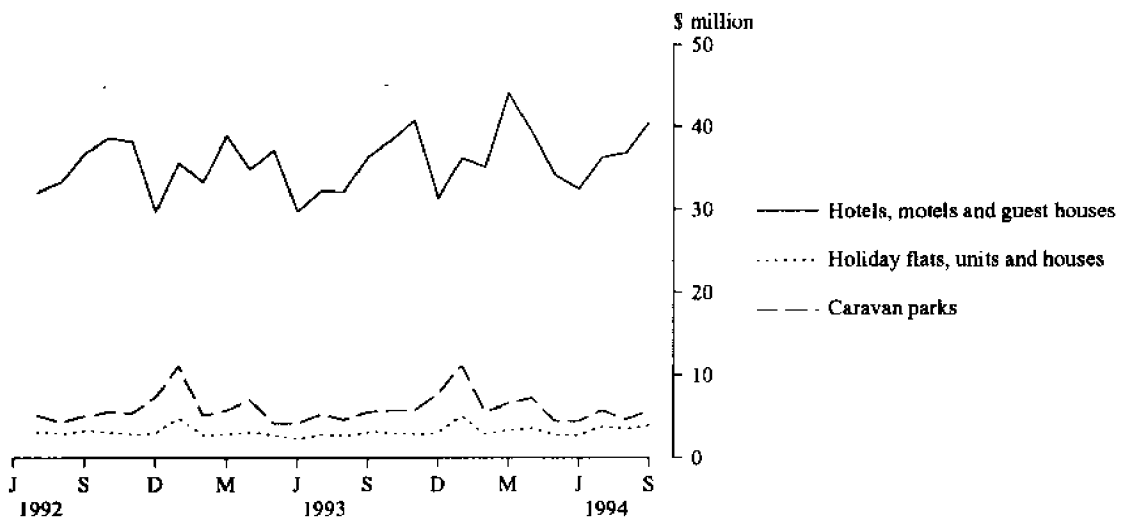
**MONTHLY ROOM NIGHTS AVAILABLE AND OCCUPIED:
HOTELS, MOTELS AND GUEST HOUSES,
VICTORIA**



**MONTHLY OCCUPANCY RATES,
VICTORIA**



**MONTHLY TAKINGS FROM ACCOMMODATION,
VICTORIA**



CONTENTS

<i>Table</i>	<i>Page</i>
-	Main features 1
-	Diagrams 2
1	Summary of hotels, motels and guest houses with facilities, Victoria 4
2	Summary of caravan parks, Victoria 5
3	Summary of holiday flats, units and houses, Victoria 6
4	Summary of visitor hostels, Victoria 6
5	Hotels, motels and guest houses with facilities by star grading, Melbourne City, Melbourne Statistical Division and Victoria 7
6	Hotels, motels and guest houses with facilities by statistical division, Victoria 9
7	Hotels, motels and guest houses with facilities: Statistical divisions and selected statistical local areas, Victoria 12
8	Holiday flats, units and houses by statistical division, Victoria 16
9	Caravan parks: Statistical divisions and selected statistical local areas, Victoria 18
10	Caravan parks by statistical division, Victoria 22
11	Visitor hostels by statistical division, Victoria 25
-	Explanatory Notes 26
-	Changes to geographic boundaries, Victoria (Effective 1 July 1994) 30
-	Reference maps -- statistical divisions of Victoria and statistical local areas of Melbourne Statistical Division 32

TABLE 1— SUMMARY OF HOTELS, MOTELS AND GUEST HOUSES WITH FACILITIES, VICTORIA (a)

Particulars	Unit	Quarter ended				Year ended			
		September 1993	December 1993	March 1994	June 1994	September 1994	December 1994	December 1993	December 1994
LICENSED HOTELS WITH FACILITIES									
Establishments	No.	212	199	196	194	189	189
Guest rooms	No.	9,934	10,279	10,152	10,089	10,010	10,089
Bed spaces	No.	23,764	24,793	24,772	24,577	24,462	24,598
Employment (persons)	No.	9,138	9,699	9,908	9,553	9,431	9,592
Room nights occupied	'000	428.5	532.1	535.2	502.2	527.6	605.0	1,835.7	2,170.0
Room occupancy rate	per cent	47.0	56.3	58.6	54.7	57.3	65.4	50.8	59.0
Guest nights	'000	654.6	827.6	833.7	769.8	813.1	938.0	2,846.2	3,354.6
Bed occupancy rate	per cent	30.0	36.3	37.4	34.4	36.2	41.6	32.8	37.4
Guest arrivals	'000	314.2	393.2	375.0	359.7	383.3	424.5	1,343.3	1,542.6
Average length of stay	days	2.1	2.1	2.2	2.1	2.1	2.2	2.1	2.2
Takings from accommodation	\$'000	46,741	58,112	59,753	52,512	58,159	68,649	202,113	239,073
MOTELS AND GUEST HOUSES WITH FACILITIES									
Establishments	No.	831	826	821	824	814	817
Guest rooms	No.	20,382	19,986	19,836	19,879	19,670	19,803
Bed spaces	No.	59,806	58,439	57,909	58,006	57,526	57,844
Employment (persons)	No.	6,825	6,501	6,585	6,388	6,412	6,460
Room nights occupied	'000	774.9	792.3	837.5	807.8	787.9	855.9	3,229.3	3,289.1
Room occupancy rate	per cent	41.4	43.1	46.9	44.7	43.6	47.0	43.7	45.6
Guest nights	'000	1,352.3	1,384.6	1,509.5	1,405.5	1,370.5	1,475.0	5,664.0	5,760.5
Bed occupancy rate	per cent	24.6	25.8	29.0	26.7	25.9	27.7	26.2	27.3
Guest arrivals	'000	791.9	834.4	879.7	817.4	791.4	875.8	3,310.7	3,364.3
Average length of stay	days	1.7	1.7	1.7	1.7	1.7	1.7	1.7	1.7
Takings from accommodation	\$'000	53,895	52,390	55,701	53,334	55,510	58,423	218,415	222,967
TOTAL HOTELS, MOTELS AND GUEST HOUSES WITH FACILITIES									
Establishments	No.	1,043	1,025	1,017	1,018	1,003	1,006
Guest rooms	No.	30,316	30,265	29,988	29,968	29,680	29,892
Bed spaces	No.	83,570	83,232	82,681	82,583	81,988	82,442
Employment (persons)	No.	15,963	16,200	16,493	15,941	15,843	16,052
Room nights occupied	'000	1,203.4	1,324.4	1,372.7	1,310.0	1,315.4	1,460.9	5,065.0	5,459.0
Room occupancy rate	per cent	43.2	47.6	50.9	48.1	48.2	53.2	46.0	50.1
Guest nights	'000	2,006.8	2,212.1	2,343.2	2,175.3	2,183.6	2,413.0	8,510.2	9,115.1
Bed occupancy rate	per cent	26.2	28.9	31.5	29.0	29.0	31.9	28.1	30.3
Guest arrivals	'000	1,106.0	1,227.6	1,254.7	1,177.1	1,174.7	1,300.3	4,654.0	4,906.9
Average length of stay	days	1.8	1.8	1.9	1.8	1.9	1.9	1.8	1.9
Takings from accommodation	\$'000	100,636	110,502	115,454	105,846	113,668	127,072	420,528	462,040

(a) From December quarter 1993, establishments with fewer than 5 rooms have been formally excluded from the scope of this collection. See Explanatory Note 2 (page 26).

TABLE 2 — SUMMARY OF CARAVAN PARKS, VICTORIA

Particulars	Unit	Quarter ended				Year ended		December 1993	December 1994
		September 1993	December 1993	March 1994	June 1994	September 1994	December 1994		
SHORT-TERM CARAVAN PARKS									
Establishments	No.	436	442	441	441	438	436
Capacity									
On-site vans	No.	2,084	2,046	2,055	2,056	2,063	2,075
Other powered sites	No.	36,064	36,246	36,452	36,475	36,395	36,263
Unpowered sites	No.	13,104	13,064	13,261	13,172	13,066	12,680
Cabins, etc.	No.	2,170	2,245	2,284	2,268	2,307	2,359
<i>Total capacity</i>	<i>No.</i>	<i>53,422</i>	<i>53,601</i>	<i>54,052</i>	<i>53,971</i>	<i>53,831</i>	<i>53,377</i>
Sites occupied by long-term guests	No.	1,814	1,854	1,849	1,859	1,708	1,716
Other sites permanently reserved	No.	13,847	14,425	14,976	14,518	14,447	14,850
Employment (persons)	No.	1,321	1,487	1,433	1,328	1,325	1,477
Site nights occupied	'000	1,665.5	1,899.3	2,204.2	1,844.7	1,718.9	1,946.8	7,544.0	7,714.6
Site occupancy rate	per cent	34.0	38.7	45.3	37.6	34.9	39.6	38.5	39.4
Takings from accommodation	\$'000	9,914	13,469	17,183	10,268	10,602	14,503	49,864	52,556
LONG-TERM CARAVAN PARKS									
Establishments	No.	157	159	158	158	164	164
Capacity									
On-site vans	No.	1,924	1,913	1,940	1,829	1,858	1,904
Other powered sites	No.	8,735	8,689	8,669	8,568	8,567	8,618
Unpowered sites	No.	2,044	2,066	2,066	2,155	2,299	2,172
Cabins, etc.	No.	881	908	920	1,107	1,138	1,142
<i>Total capacity</i>	<i>No.</i>	<i>13,584</i>	<i>13,576</i>	<i>13,595</i>	<i>13,659</i>	<i>13,862</i>	<i>13,836</i>
Sites occupied by long-term guests	No.	4,591	4,637	4,726	4,603	4,749	4,750
Other sites permanently reserved	No.	390	405	385	367	357	340
Employment (persons)	No.	491	510	484	484	510	512
Site nights occupied	'000	538.5	550.4	578.1	549.6	551.4	564.9	2,158.7	2,244.0
Site occupancy rate	per cent	43.1	44.1	47.2	44.2	43.2	44.4	45.1	44.7
Takings from accommodation	\$'000	5,387	5,628	6,116	5,715	5,635	6,006	21,843	23,472
TOTAL CARAVAN PARKS									
Establishments	No.	593	601	599	599	602	600
Capacity									
On-site vans	No.	4,008	3,959	3,995	3,885	3,921	3,979
Other powered sites	No.	44,799	44,935	45,121	45,043	44,962	44,881
Unpowered sites	No.	15,148	15,130	15,327	15,327	15,365	14,852
Cabins, etc.	No.	3,051	3,153	3,204	3,375	3,445	3,501
<i>Total capacity</i>	<i>No.</i>	<i>67,006</i>	<i>67,177</i>	<i>67,647</i>	<i>67,630</i>	<i>67,693</i>	<i>67,213</i>
Sites occupied by long-term guests	No.	6,405	6,491	6,575	6,462	6,457	6,466
Other sites permanently reserved	No.	14,237	14,830	15,361	14,885	14,804	15,190
Employment (persons)	No.	1,812	1,997	1,917	1,812	1,835	1,989
Site nights occupied	'000	2,204.0	2,449.8	2,782.3	2,394.3	2,270.3	2,511.7	9,702.7	9,958.6
Site occupancy rate	per cent	35.8	39.8	45.7	39.0	36.6	40.6	39.8	40.5
Takings from accommodation	\$'000	15,301	19,096	23,299	15,983	16,238	20,509	71,707	76,028

TABLE 3 — SUMMARY OF HOLIDAY FLATS, UNITS AND HOUSES, VICTORIA

Particulars	Unit	Quarter ended						Year ended	
		September 1993	December 1993	March 1994	June 1994	September 1994	December 1994	December 1993	December 1994
Letting entities	No.	184	204	210	197	197	200
Flats, units and houses									
Single bedroom	No.	985	1,032	1,013	971	1,016	1,042
Multiple bedroom	No.	2,002	2,314	2,558	2,054	2,103	2,263
<i>Total flats, units and houses</i>	<i>No.</i>	<i>2,987</i>	<i>3,346</i>	<i>3,571</i>	<i>3,025</i>	<i>3,119</i>	<i>3,305</i>	<i>..</i>	<i>..</i>
Bed spaces	No.	13,160	15,205	16,120	13,151	13,391	14,573
Employment (persons) (a)	No.	625	676	702	702	732	730
Unit nights occupied	'000	108.7	118.8	154.1	117.2	127.2	131.5	484.9	530.0
Unit occupancy rate	per cent	39.6	38.9	49.0	42.6	44.4	43.2	42.2	44.9
Unit lettings	'000	27.4	32.0	36.6	29.7	30.2	31.6	120.8	128.1
Average length of stay	days	4.0	3.7	4.2	3.9	4.2	4.2	4.0	4.1
Takings from accommodation	\$'000	8,648	8,884	11,386	9,009	11,238	10,461	36,150	42,094

(a) Employment numbers exclude real estate agents and their employees.

TABLE 4 — SUMMARY OF VISITOR HOSTELS, VICTORIA

Particulars	Unit	Quarter ended						Year ended	
		September 1993	December 1993	March 1994	June 1994	September 1994	December 1994	December 1993	December 1994
Establishments	No.	43	45	49	49	52	51
Bed spaces	No.	2,531	2,576	2,789	2,797	2,927	2,825
Employment (persons)	No.	140	150	160	145	157	160
Guest nights	'000	67.7	92.7	117.7	77.7	82.4	102.9	339.0	380.7
Bed occupancy rate	per cent	29.1	39.1	46.9	30.5	30.9	39.6	36.2	36.9
Guest arrivals	'000	26.9	36.7	47.1	32.7	34.1	43.3	130.1	157.1
Average length of stay	days	2.5	2.5	2.5	2.4	2.4	2.4	2.6	2.4
Takings from accommodation	\$'000	914	1,144	1,529	995	1,092	1,310	4,159	4,925

TABLE 5 — HOTELS, MOTELS AND GUEST HOUSES WITH FACILITIES BY STAR GRADING,
MELBOURNE CITY, MELBOURNE STATISTICAL DIVISION AND VICTORIA

Particulars	Melbourne City				Melbourne Statistical Division					
	Star grading			Total	Star grading					Total
	Ungraded, 1 and 2	3	4 and 5		Ungraded and 1	2	3	4	5	
ESTABLISHMENTS, CAPACITY AND EMPLOYMENT										
<i>December quarter 1993—</i>										
Establishments	12	22	20	54	20	69	101	44	8	242
Guest rooms	1,300	1,960	4,869	8,129	612	2,218	4,462	5,010	2,654	14,956
Bed spaces	2,692	5,256	10,435	18,383	1,586	5,298	12,358	11,744	5,526	36,512
Employment (persons)	333	699	4,247	5,279	401	1,230	1,800	3,360	3,193	9,984
<i>December quarter 1994—</i>										
Establishments	13	22	21	56	15	70	100	46	9	240
Guest rooms	1,221	2,088	5,251	8,560	459	2,132	4,509	5,035	2,708	14,843
Bed spaces	2,537	5,419	11,446	19,402	1,274	5,062	12,233	12,215	5,664	36,448
Employment (persons)	299	683	4,826	5,808	316	1,303	1,860	3,210	3,290	9,979
ROOM NIGHTS OCCUPIED ('000)										
<i>December quarter 1993</i>	57.1	108.4	306.8	472.3	21.5	84.6	224.3	296.7	165.2	792.3
<i>1994—</i>										
October	21.7	45.2	130.8	197.7	6.3	32.7	90.0	119.4	68.0	316.3
November	20.3	45.6	132.0	197.9	5.5	30.7	88.3	121.8	66.1	312.3
December	16.6	38.1	116.0	170.6	4.6	27.6	74.8	104.9	58.1	270.0
<i>December quarter 1994</i>	58.6	128.9	378.8	566.3	16.4	91.0	253.1	346.0	192.1	898.6
ROOM OCCUPANCY RATES (per cent)										
<i>December quarter 1993</i>	47.8	60.1	68.5	63.2	38.2	41.5	54.6	64.4	67.7	57.6
<i>1994—</i>										
October	57.4	69.8	80.3	74.5	44.1	50.2	64.4	76.5	81.0	68.9
November	55.3	72.9	83.8	77.1	39.7	48.7	65.3	80.6	81.3	70.3
December	43.8	58.8	71.3	64.3	32.6	42.2	53.5	67.2	69.2	58.8
<i>December quarter 1994</i>	52.1	67.1	78.4	71.9	38.8	47.0	61.0	74.7	77.1	65.9
GUEST NIGHTS ('000)										
<i>December quarter 1993</i>	89.4	186.8	476.7	753.0	33.9	137.1	375.6	467.3	243.1	1,257.0
<i>1994—</i>										
October	33.5	75.8	197.3	306.6	10.8	51.4	146.6	180.5	99.7	489.0
November	31.5	75.6	195.5	302.7	9.7	48.9	141.2	180.7	93.5	473.9
December	26.7	63.3	183.6	273.7	9.1	45.8	123.1	161.5	89.7	429.1
<i>December quarter 1994</i>	91.7	214.7	576.4	882.9	29.6	146.0	410.8	522.7	282.9	1,392.0
BED OCCUPANCY RATES (per cent)										
<i>December quarter 1993</i>	36.1	38.6	49.7	44.5	23.3	28.1	33.0	43.2	47.8	37.4
<i>1994—</i>										
October	42.6	45.1	55.6	51.0	27.3	33.2	38.7	47.7	56.8	43.4
November	41.5	46.5	56.9	52.0	25.4	32.6	38.5	49.3	55.0	43.4
December	33.9	37.7	51.8	45.5	23.0	29.5	32.4	42.6	51.1	38.0
<i>December quarter 1994</i>	39.3	43.1	54.7	49.5	25.2	31.8	36.5	46.5	54.3	41.6
GUEST ARRIVALS ('000)										
<i>December quarter 1993</i>	40.4	85.1	200.6	326.1	20.5	71.0	187.3	199.7	113.9	592.4
<i>1994—</i>										
October	13.9	36.0	75.7	125.6	6.0	23.6	72.6	71.1	41.4	214.8
November	13.1	34.2	80.5	127.8	5.2	22.9	69.1	74.6	42.7	214.5
December	11.1	31.4	75.8	118.4	4.8	21.9	63.0	70.8	41.9	202.4
<i>December quarter 1994</i>	38.1	101.7	232.0	371.8	16.0	68.5	204.8	216.5	126.0	631.7
AVERAGE LENGTH OF STAY (days)										
<i>December quarter 1993</i>	2.2	2.2	2.4	2.3	1.7	1.9	2.0	2.3	2.1	2.1
<i>December quarter 1994</i>	2.4	2.1	2.5	2.4	1.9	2.1	2.0	2.4	2.2	2.2
TAKINGS FROM ACCOMMODATION (\$'000)										
<i>December quarter 1993</i>	3,151	8,428	38,781	50,361	1,356	4,617	16,949	32,372	24,203	79,496
<i>1994—</i>										
October	1,249	3,653	18,063	22,965	453	1,818	7,040	13,536	10,534	33,381
November	1,152	3,484	17,783	22,419	402	1,719	6,661	13,912	9,839	32,532
December	921	2,823	14,643	18,387	373	1,505	5,595	11,446	8,201	27,120
<i>December quarter 1994</i>	3,323	9,959	50,489	63,772	1,228	5,042	19,297	38,894	28,573	93,034

TABLE 5 — HOTELS, MOTELS AND GUEST HOUSES WITH FACILITIES BY STAR GRADING,
MELBOURNE CITY, MELBOURNE STATISTICAL DIVISION AND VICTORIA—continued

Particulars	Victoria						Total
	Star grading						
	1	2	3	4	5	Ungraded	
ESTABLISHMENTS, CAPACITY AND EMPLOYMENT							
<i>December quarter 1993—</i>							
Establishments	23	385	456	66	8	87	1,025
Guest rooms	284	7,490	12,246	5,896	2,654	1,695	30,265
Bed spaces	725	21,258	36,303	14,564	5,526	4,856	83,232
Employment (persons)	267	3,394	4,512	3,911	3,193	923	16,200
<i>December quarter 1994—</i>							
Establishments	17	374	479	72	9	55	1,006
Guest rooms	228	7,059	12,676	6,057	2,708	1,164	29,892
Bed spaces	586	19,926	37,397	15,368	5,664	3,501	82,442
Employment (persons)	227	3,269	4,641	3,941	3,290	684	16,052
ROOM NIGHTS OCCUPIED ('000)							
<i>December quarter 1993</i>	5.2	236.5	532.5	343.4	165.2	41.7	1,324.4
<i>1994—</i>							
October	1.7	85.9	217.7	140.2	68.0	12.4	525.8
November	1.2	77.4	200.8	142.8	66.1	11.6	499.9
December	1.0	71.6	172.8	122.0	58.1	9.9	435.3
<i>December quarter 1994</i>	3.9	234.9	591.2	404.9	192.1	33.9	1,460.9
ROOM OCCUPANCY RATES (per cent)							
<i>December quarter 1993</i>	19.7	34.3	47.3	63.3	67.7	26.7	47.6
<i>1994—</i>							
October	23.5	39.6	55.4	74.6	81.0	34.3	56.9
November	18.1	36.7	52.8	78.6	81.3	33.2	55.8
December	14.2	32.8	44.0	65.0	69.2	27.5	47.0
<i>December quarter 1994</i>	18.6	36.4	50.7	72.7	77.1	31.6	53.2
GUEST NIGHTS ('000)							
<i>December quarter 1993</i>	7.3	421.4	925.5	542.0	243.1	72.8	2,212.1
<i>1994—</i>							
October	2.2	151.8	377.4	215.3	99.7	23.2	869.5
November	1.7	134.1	330.1	215.2	93.5	21.1	795.6
December	1.6	133.7	308.5	195.2	89.7	19.0	747.9
<i>December quarter 1994</i>	5.5	419.5	1,016.0	625.7	282.9	63.3	2,413.0
BED OCCUPANCY RATES (per cent)							
<i>December quarter 1993</i>	10.9	21.5	27.7	40.5	47.8	16.3	28.9
<i>1994—</i>							
October	12.1	24.7	32.6	45.2	56.8	21.4	34.1
November	9.6	22.5	29.4	46.7	55.0	20.1	32.2
December	9.1	21.7	26.6	41.0	51.1	17.5	29.3
<i>December quarter 1994</i>	10.3	23.0	29.5	44.3	54.3	19.7	31.9
GUEST ARRIVALS ('000)							
<i>December quarter 1993</i>	4.6	262.2	561.0	248.1	113.9	37.8	1,227.6
<i>1994—</i>							
October	1.1	88.2	227.3	93.1	41.4	11.4	462.5
November	1.0	78.8	199.2	96.6	42.7	10.2	428.5
December	1.1	79.2	187.4	91.1	41.9	8.7	409.4
<i>December quarter 1994</i>	3.1	246.1	614.0	280.7	126.0	30.3	1,300.3
AVERAGE LENGTH OF STAY (days)							
<i>December quarter 1993</i>	1.6	1.6	1.6	2.2	2.1	1.9	1.8
<i>December quarter 1994</i>	1.8	1.7	1.7	2.2	2.2	2.1	1.9
TAKINGS FROM ACCOMMODATION (\$'000)							
<i>December quarter 1993</i>	169	11,788	35,226	36,309	24,203	2,808	110,502
<i>1994—</i>							
October	71	4,373	14,930	15,246	10,534	848	46,002
November	40	3,976	13,524	15,693	9,839	800	43,871
December	34	3,671	11,747	12,841	8,201	704	37,198
<i>December quarter 1994</i>	145	12,020	40,201	43,780	28,573	2,352	127,072

TABLE 6—HOTELS, MOTELS AND GUEST HOUSES WITH FACILITIES BY STATISTICAL DIVISION,
VICTORIA

Particulars	Melbourne (SD)			Barwon (SD)			Western District (SD)			Central Highlands (SD)		
	Licensed hotels	Motels etc.	Total	Licensed hotels	Motels etc.	Total	Licensed hotels	Motels etc.	Total	Licensed hotels	Motels etc.	Total
ESTABLISHMENTS, CAPACITY AND EMPLOYMENT												
<i>December quarter 1993—</i>												
Establishments	70	172	242	16	62	78	14	62	76	10	46	56
Guest rooms	7,850	7,106	14,956	380	1,257	1,637	222	1,087	1,309	178	956	1,134
Bed spaces	17,755	18,757	36,512	1,149	3,723	4,872	601	3,185	3,786	497	3,004	3,501
Employment (persons)	7,461	2,523	9,984	549	441	990	245	400	645	144	359	503
<i>December quarter 1994—</i>												
Establishments	68	172	240	16	61	77	13	62	75	11	47	58
Guest rooms	7,801	7,042	14,843	374	1,243	1,617	238	1,060	1,298	187	975	1,162
Bed spaces	17,861	18,587	36,448	1,191	3,698	4,889	621	3,097	3,718	525	3,052	3,577
Employment (persons)	7,453	2,526	9,979	548	464	1,012	285	387	672	156	375	531
ROOM NIGHTS OCCUPIED ('000)												
<i>December quarter 1993</i>	461.5	330.8	792.3	13.8	48.2	61.9	6.9	43.6	50.5	8.0	44.4	52.4
<i>1994—</i>												
October	182.5	133.9	316.3	5.3	18.7	24.0	2.2	16.4	18.6	3.6	19.0	22.6
November	185.6	126.7	312.3	6.3	18.3	24.6	2.6	16.5	19.1	2.8	14.9	17.7
December	162.2	107.8	270.0	5.1	17.1	22.3	2.2	14.6	16.8	2.5	11.6	14.2
<i>December quarter 1994</i>	530.3	368.3	898.6	16.7	54.2	70.9	7.0	47.5	54.5	9.0	45.5	54.5
ROOM OCCUPANCY RATES (per cent)												
<i>December quarter 1993</i>	63.9	50.6	57.6	39.4	41.7	41.1	34.0	43.6	41.9	49.1	50.5	50.3
<i>1994—</i>												
October	75.7	61.3	68.9	45.6	48.6	47.9	30.2	49.8	46.2	63.0	62.8	62.8
November	79.6	60.0	70.3	55.8	49.2	50.7	36.1	52.0	49.1	49.8	50.9	50.7
December	67.1	49.5	58.8	44.3	45.0	44.9	29.8	44.3	41.7	45.4	38.5	39.6
<i>December quarter 1994</i>	74.1	56.9	65.9	48.5	47.6	47.8	32.0	48.7	45.6	52.8	50.7	51.1
GUEST NIGHTS ('000)												
<i>December quarter 1993</i>	713.8	543.2	1,257.0	19.6	84.7	104.2	10.7	79.7	90.4	15.7	85.0	100.7
<i>1994—</i>												
October	278.3	210.7	489.0	9.2	32.5	41.6	3.5	28.8	32.4	7.4	40.4	47.8
November	277.8	196.1	473.9	11.9	29.9	41.7	3.9	27.6	31.5	4.9	27.7	32.6
December	251.8	177.3	429.1	12.9	31.7	44.6	3.7	28.1	31.8	4.6	23.3	28.0
<i>December quarter 1994</i>	807.9	584.1	1,392.0	33.9	94.0	127.9	11.1	84.5	95.6	16.9	91.4	108.3
BED OCCUPANCY RATES (per cent)												
<i>December quarter 1993</i>	43.7	31.5	37.4	18.5	24.7	23.3	19.4	27.2	26.0	34.3	30.8	31.3
<i>1994—</i>												
October	50.5	36.6	43.4	24.8	28.3	27.5	18.3	30.0	28.1	45.5	42.7	43.1
November	52.0	35.2	43.4	33.2	26.9	28.4	20.9	29.7	28.2	31.0	30.2	30.3
December	45.5	30.9	38.0	34.8	28.0	29.7	19.0	29.3	27.6	29.5	24.6	25.3
<i>December quarter 1994</i>	49.3	34.2	41.6	30.9	27.7	28.5	19.4	29.7	28.0	35.5	32.5	33.0
GUEST ARRIVALS ('000)												
<i>December quarter 1993</i>	323.7	268.7	592.4	9.6	55.8	65.4	6.6	57.1	63.7	10.4	60.9	71.3
<i>1994—</i>												
October	114.5	100.3	214.8	4.3	22.2	26.4	2.7	20.7	23.3	4.6	26.4	31.0
November	120.1	94.4	214.5	5.5	20.2	25.7	2.7	20.0	22.7	3.3	20.3	23.6
December	114.0	88.5	202.4	5.2	21.3	26.5	2.5	19.5	22.0	3.2	16.7	19.9
<i>December quarter 1994</i>	348.5	283.2	631.7	15.0	63.6	78.6	7.9	60.2	68.1	11.1	63.4	74.5
AVERAGE LENGTH OF STAY (days)												
<i>December quarter 1993</i>	2.2	2.0	2.1	2.0	1.5	1.6	1.6	1.4	1.4	1.5	1.4	1.4
<i>December quarter 1994</i>	2.3	2.1	2.2	2.3	1.5	1.6	1.4	1.4	1.4	1.5	1.4	1.5
TAKINGS FROM ACCOMMODATION (\$'000)												
<i>December quarter 1993</i>	54,057	25,439	79,496	1,119	3,217	4,336	338	2,583	2,921	609	2,812	3,421
<i>1994—</i>												
October	22,819	10,562	33,381	462	1,217	1,679	117	990	1,107	270	1,280	1,550
November	22,627	9,906	32,532	595	1,247	1,842	120	958	1,078	209	994	1,203
December	18,681	8,439	27,120	390	1,168	1,558	108	920	1,028	186	738	924
<i>December quarter 1994</i>	64,126	28,907	93,034	1,447	3,632	5,079	344	2,868	3,213	665	3,012	3,677

TABLE 6—HOTELS, MOTELS AND GUEST HOUSES WITH FACILITIES BY STATISTICAL DIVISION,
VICTORIA—continued

Particulars	Wimmera (SD)	Mallee (SD)	Loddon-Campaspe (SD)		Goulburn (SD)			
	Total	Total	Licensed hotels	Motels etc.	Total	Licensed hotels	Motels etc.	Total
ESTABLISHMENTS, CAPACITY AND EMPLOYMENT								
<i>December quarter 1993—</i>								
Establishments	50	70	11	72	83	26	93	119
Guest rooms	864	1,610	129	1,368	1,497	605	1,739	2,344
Bed spaces	2,613	4,935	331	4,243	4,574	1,868	5,423	7,291
Employment (persons)	245	567	116	428	544	372	488	860
<i>December quarter 1994—</i>								
Establishments	51	66	11	73	84	22	90	112
Guest rooms	879	1,545	129	1,392	1,521	501	1,697	2,198
Bed spaces	2,665	4,749	348	4,290	4,638	1,604	5,310	6,914
Employment (persons)	239	572	152	466	618	341	484	825
ROOM NIGHTS OCCUPIED ('000)								
<i>December quarter 1993</i>	33.9	63.4	3.4	58.2	61.6	14.3	51.5	65.8
<i>1994—</i>								
October	14.3	26.8	1.3	23.6	25.0	5.0	20.5	25.5
November	11.8	21.0	1.3	20.4	21.7	4.5	19.6	24.1
December	9.8	18.0	1.1	16.5	17.6	3.8	16.6	20.4
<i>December quarter 1994</i>	35.9	65.8	3.7	60.6	64.3	13.4	56.7	70.1
ROOM OCCUPANCY RATES (per cent)								
<i>December quarter 1993</i>	42.6	42.8	28.6	46.3	44.7	25.7	32.2	30.5
<i>1994—</i>								
October	52.5	57.0	33.1	54.8	52.9	32.4	38.9	37.5
November	44.8	45.4	33.4	48.9	47.6	30.1	38.6	36.6
December	35.8	37.6	27.1	38.3	37.3	24.4	31.6	29.9
<i>December quarter 1994</i>	44.4	46.6	31.2	47.3	45.9	29.0	36.3	34.7
GUEST NIGHTS ('000)								
<i>December quarter 1993</i>	61.2	112.5	4.9	106.3	111.2	22.8	91.9	114.8
<i>1994—</i>								
October	25.5	48.4	2.0	43.2	45.1	8.2	35.5	43.7
November	19.6	34.9	1.8	36.2	38.0	6.9	33.3	40.2
December	17.8	32.7	1.5	32.1	33.6	6.4	30.6	37.0
<i>December quarter 1994</i>	62.8	116.0	5.2	111.5	116.7	21.5	99.4	120.9
BED OCCUPANCY RATES (per cent)								
<i>December quarter 1993</i>	25.5	24.8	16.1	27.2	26.4	13.3	18.4	17.1
<i>1994—</i>								
October	30.8	33.3	18.1	32.5	31.4	16.5	21.6	20.4
November	24.5	24.5	17.0	28.1	27.3	14.3	20.9	19.4
December	21.5	22.2	13.8	24.1	23.4	12.8	18.6	17.3
<i>December quarter 1994</i>	25.6	26.7	16.3	28.2	27.3	14.6	20.4	19.0
GUEST ARRIVALS ('000)								
<i>December quarter 1993</i>	42.4	72.6	3.9	73.3	77.2	13.9	56.9	70.8
<i>1994—</i>								
October	17.5	30.9	1.4	30.6	32.0	4.8	22.0	26.7
November	14.0	23.0	1.4	26.1	27.5	4.3	20.8	25.1
December	12.6	21.3	1.2	22.5	23.7	4.1	19.0	23.1
<i>December quarter 1994</i>	44.1	75.3	3.9	79.2	83.1	13.2	61.8	74.9
AVERAGE LENGTH OF STAY (days)								
<i>December quarter 1993</i>	1.4	1.6	1.3	1.4	1.4	1.6	1.6	1.6
<i>December quarter 1994</i>	1.4	1.5	1.3	1.4	1.4	1.6	1.6	1.6
TAKINGS FROM ACCOMMODATION (\$'000)								
<i>December quarter 1993</i>	1,897	3,288	171	3,566	3,737	852	3,147	3,999
<i>1994—</i>								
October	821	1,370	61	1,527	1,588	301	1,365	1,666
November	638	1,108	63	1,311	1,375	270	1,291	1,561
December	548	948	57	1,036	1,093	226	1,084	1,310
<i>December quarter 1994</i>	2,006	3,426	181	3,875	4,056	797	3,741	4,537

TABLE 6—HOTELS, MOTELS AND GUEST HOUSES WITH FACILITIES BY STATISTICAL DIVISION,
VICTORIA—continued

Particulars	Ovens-Murray (SD)			East Gippsland (SD)			Gippsland (SD)			Victoria		
	Licensed hotels	Motels etc.	Total	Licensed hotels	Motels etc.	Total	Licensed hotels	Motels etc.	Total	Licensed hotels	Motels etc.	Total
ESTABLISHMENTS, CAPACITY AND EMPLOYMENT												
<i>December quarter 1993—</i>												
Establishments	15	91	106	9	63	72	18	55	73	199	826	1,025
Guest rooms	290	1,852	2,142	146	1,173	1,319	259	1,194	1,453	10,279	19,986	30,265
Bed spaces	920	6,004	6,924	442	3,552	3,994	716	3,514	4,230	24,793	58,439	83,232
Employment (persons)	184	509	693	84	358	442	350	377	727	9,699	6,501	16,200
<i>December quarter 1994—</i>												
Establishments	14	90	104	8	61	69	16	54	70	189	817	1,006
Guest rooms	276	1,807	2,083	124	1,189	1,313	238	1,195	1,433	10,089	19,803	29,892
Bed spaces	856	5,843	6,699	408	3,547	3,955	660	3,530	4,190	24,598	57,844	82,442
Employment (persons)	119	414	533	82	388	470	255	346	601	9,592	6,460	16,052
ROOM NIGHTS OCCUPIED ('000)												
<i>December quarter 1993</i>	5.7	46.7	52.4	3.3	41.8	45.1	6.9	38.2	45.0	532.1	792.3	1,324.4
<i>1994—</i>												
October	1.8	18.7	20.5	1.2	15.0	16.2	2.5	13.4	15.9	208.9	316.9	525.8
November	1.7	16.2	17.8	1.1	13.4	14.6	2.5	12.6	15.0	211.3	288.5	499.9
December	1.8	15.6	17.4	1.2	14.2	15.3	2.2	11.4	13.6	184.8	250.5	435.3
<i>December quarter 1994</i>	5.3	50.5	55.8	3.5	42.6	46.1	7.2	37.4	44.6	605.0	855.9	1,460.9
ROOM OCCUPANCY RATES (per cent)												
<i>December quarter 1993</i>	21.2	27.4	26.6	24.9	38.7	37.2	28.9	34.7	33.7	56.3	43.1	47.6
<i>1994—</i>												
October	21.2	33.4	31.8	32.0	40.6	39.8	34.2	36.2	35.8	67.2	51.6	56.9
November	20.1	29.8	28.6	30.5	37.7	37.0	34.4	35.1	35.0	70.0	48.6	55.8
December	21.1	27.8	26.9	30.4	38.4	37.7	29.8	30.9	30.7	59.1	40.9	47.0
<i>December quarter 1994</i>	20.8	30.4	29.1	31.0	38.9	38.2	32.8	34.0	33.8	65.4	47.0	53.2
GUEST NIGHTS ('000)												
<i>December quarter 1993</i>	9.3	88.6	98.0	6.5	79.1	85.6	11.1	65.5	76.5	827.6	1,384.6	2,212.1
<i>1994—</i>												
October	3.0	36.7	39.7	2.6	26.8	29.4	3.8	23.2	27.0	323.3	546.2	869.5
November	2.8	30.3	33.0	2.3	23.2	25.5	3.6	21.1	24.7	320.2	475.4	795.6
December	3.2	32.5	35.7	2.7	29.2	31.9	3.6	22.2	25.8	294.6	453.3	747.9
<i>December quarter 1994</i>	8.9	99.4	108.4	7.6	79.2	86.8	11.0	66.5	77.5	938.0	1,475.0	2,413.0
BED OCCUPANCY RATES (per cent)												
<i>December quarter 1993</i>	11.0	16.0	15.4	15.9	24.2	23.3	16.8	20.3	19.7	36.3	25.8	28.9
<i>1994—</i>												
October	11.3	20.2	19.1	20.7	24.3	24.0	18.5	21.2	20.8	42.6	30.5	34.1
November	10.7	17.3	16.4	19.1	21.8	21.5	18.3	19.9	19.7	43.5	27.4	32.2
December	12.0	17.9	17.2	21.0	26.6	26.0	17.5	20.3	19.9	38.7	25.3	29.3
<i>December quarter 1994</i>	11.4	18.5	17.6	20.3	24.3	23.9	18.1	20.5	20.1	41.6	27.7	31.9
GUEST ARRIVALS ('000)												
<i>December quarter 1993</i>	6.5	54.8	61.3	4.1	53.5	57.7	7.1	45.6	52.7	393.2	834.4	1,227.6
<i>1994—</i>												
October	2.0	20.0	22.0	1.6	18.6	20.2	2.1	15.4	17.5	140.8	321.7	462.5
November	1.8	16.8	18.7	1.3	15.8	17.1	2.0	14.6	16.7	145.1	283.4	428.5
December	2.0	17.2	19.2	1.7	19.9	21.6	2.3	14.6	17.0	138.6	270.8	409.4
<i>December quarter 1994</i>	5.8	54.1	59.9	4.6	54.3	58.9	6.4	44.7	51.1	424.5	875.8	1,300.3
AVERAGE LENGTH OF STAY (days)												
<i>December quarter 1993</i>	1.4	1.6	1.6	1.6	1.5	1.5	1.6	1.4	1.5	2.1	1.7	1.8
<i>December quarter 1994</i>	1.5	1.8	1.8	1.7	1.5	1.5	1.7	1.5	1.5	2.2	1.7	1.9
TAKINGS FROM ACCOMMODATION (\$'000)												
<i>December quarter 1993</i>	174	2,533	2,707	150	2,305	2,455	251	1,994	2,246	58,112	52,390	110,502
<i>1994—</i>												
October	63	998	1,060	56	844	901	91	789	880	24,412	21,590	46,002
November	56	873	930	55	774	829	90	687	777	24,242	19,630	43,871
December	58	883	941	61	888	949	89	689	778	19,995	17,203	37,198
<i>December quarter 1994</i>	177	2,754	2,931	173	2,506	2,679	269	2,165	2,434	68,649	58,423	127,072

TABLE 7 — HOTELS, MOTELS AND GUEST HOUSES WITH FACILITIES: STATISTICAL DIVISIONS

Statistical Divisions and selected Statistical Local Areas	Establish- ments	Guest rooms	Bed spaces	Employ- ment (persons)	Room nights occupied				Room occupancy rates (per cent)			
					Oct.	Nov.	Dec.	Dec. qtr	Oct.	Nov.	Dec.	Dec. qtr
					Box Hill (C)	3	86	213	30	1,773	1,742	1,505
Broadmeadows (C)	7	192	509	143	4,158	4,093	3,508	11,759	69.9	71.1	58.9	66.6
Cranbourne (S)	5	98	329	25	1,367	1,289	969	3,625	45.0	43.8	31.9	40.2
Croydon (C)	4	91	264	175	895	871	715	2,481	31.7	31.9	25.3	29.6
Doncaster & Templestowe (C)	4	90	247	145	1,735	1,542	1,521	4,798	62.2	57.1	54.5	57.9
Essendon (C)	3	75	196	33	1,490	1,375	1,192	4,057	64.1	61.1	51.3	58.8
Flinders (S)	17	267	729	221	3,018	2,577	3,139	8,734	36.5	32.2	37.9	35.6
Footscray (C)	3	114	303	20	1,670	1,682	1,303	4,655	47.3	49.2	36.9	44.4
Frankston (C)	5	228	720	117	4,568	3,357	3,812	11,737	64.6	49.1	53.9	56.0
Hastings (S)	4	84	253	45	1,030	1,410	1,057	3,497	39.6	56.0	40.6	45.3
Healesville (S)	8	93	337	62	962	869	758	2,589	33.4	31.1	26.3	30.3
Kew (C)	3	107	253	47	1,996	1,982	1,357	5,335	60.2	61.7	40.9	54.2
Knox (C)	3	132	363	69	2,607	2,232	1,677	6,516	63.7	56.4	41.0	53.7
Lillydale (S)	6	175	396	127	2,037	1,921	1,792	5,750	37.5	36.6	33.0	35.7
Melbourne (C) — Inner	30	6,078	13,007	4,261	142,913	145,910	123,465	412,288	75.8	80.0	65.5	73.7
— Remainder	26	2,482	6,395	1,547	54,800	51,988	47,175	153,963	71.2	69.8	61.3	67.4
Mornington (S)	5	69	194	64	870	769	871	2,510	40.7	37.1	40.7	39.5
Nunawading (C)	5	154	365	179	3,545	3,381	2,817	9,743	74.3	73.2	59.0	68.8
Oakleigh (C)	5	145	425	29	2,294	2,313	1,790	6,397	51.0	53.2	39.8	48.0
Prahran (C)	8	307	786	178	6,652	6,348	5,662	18,662	69.9	68.9	59.5	66.1
Ringwood (C)	3	76	194	33	1,605	1,547	1,340	4,492	68.1	67.9	56.9	64.2
St Kilda (C)	13	613	1,426	230	12,158	11,561	10,289	34,008	64.0	62.9	54.1	60.3
South Melbourne (C)	8	1,138	3,166	752	27,667	28,380	23,094	79,141	78.4	83.1	66.7	76.1
Springvale (C)	6	153	465	252	2,581	2,600	2,263	7,444	54.4	56.6	47.7	52.9
Waverley (C)	5	149	382	227	2,848	2,706	1,821	7,375	61.7	60.5	39.4	53.8
Werribee (C)	5	128	371	88	1,632	1,709	1,526	4,867	41.1	44.5	38.5	41.3
Balance	46	1,519	4,160	880	27,474	26,121	23,559	77,154	59.5	58.4	50.0	55.9
Melbourne (SD)	240	14,843	36,448	9,979	316,345	312,275	269,977	898,597	68.9	70.3	58.8	65.9
Colac (C)	5	107	312	65	1,230	1,291	1,117	3,638	37.1	40.2	33.7	37.0
Greater Geelong City Part A (SSD)												
Corio — Inner	3	48	150	24	843	610	652	2,105	56.7	42.4	43.8	47.7
Geelong	10	355	1,039	181	6,008	6,330	4,350	16,688	54.6	59.4	39.5	51.1
South Barwon — Inner	7	114	367	31	1,641	1,364	1,260	4,265	46.4	39.9	35.7	40.7
Balance	5	124	357	60	1,857	1,900	1,628	5,385	48.3	51.1	42.4	47.2
Total	25	641	1,913	296	10,349	10,204	7,890	28,443	52.1	53.1	39.7	48.2
Greater Geelong (C) — Pts B and C	8	109	362	123	827	787	1,156	2,770	24.5	24.1	34.2	27.6
Orway (S)	14	207	597	99	3,253	3,163	3,180	9,596	50.7	50.9	49.6	50.4
Surf Coast (S) — Pts A and B	18	428	1,375	330	6,718	7,289	7,273	21,280	50.6	56.8	57.0	54.7
Balance	7	125	330	99	1,639	1,857	1,641	5,137	42.3	49.5	42.3	44.7
Barwon (SD)	77	1,617	4,889	1,012	24,016	24,591	22,257	70,864	47.9	50.7	44.9	47.8
Camperdown (T)	3	48	135	12	740	940	713	2,393	49.7	65.3	47.9	54.2
Hamilton (C)	10	200	576	97	3,211	3,636	2,474	9,321	51.8	60.6	39.9	50.7
Hampden (S)	4	36	91	16	199	312	302	813	17.8	28.9	27.1	24.5
Heytesbury (S)	6	77	230	59	1,267	1,237	1,214	3,718	53.1	53.5	50.9	52.5
Heywood (S)	5	57	164	14	453	469	489	1,411	25.6	27.4	27.7	26.9
Port Fairy (B)	7	88	250	49	1,414	1,078	1,156	3,648	51.8	40.8	42.4	45.1
Portland (C)	10	217	645	125	2,462	3,096	2,468	8,026	36.6	47.6	36.7	40.2
Warrnambool (C)	23	495	1,432	254	8,260	7,705	7,328	23,293	53.8	51.9	47.8	51.1
Balance	7	80	195	46	585	628	621	1,834	23.6	26.2	25.0	24.9
Western District (SD)	75	1,298	3,718	672	18,591	19,101	16,765	54,457	46.2	49.1	41.7	45.6
Ararat (C)	6	101	317	27	1,426	1,380	1,068	3,874	45.5	45.5	34.1	41.7
Ballarat City (SSD)												
Central	20	580	1,846	254	13,422	10,230	7,616	31,268	74.6	58.8	42.4	58.6
Balance	7	183	596	94	3,828	2,827	2,380	9,035	67.5	51.5	42.0	53.7
Total	27	763	2,442	348	17,250	13,057	9,996	40,303	72.9	57.0	42.3	57.4
Daylesford & Glenlyon (S)	10	137	363	89	1,797	1,693	1,613	5,103	42.3	41.2	38.0	40.5
Moorabool (S)	4	58	178	18	1,033	576	542	2,151	57.5	33.1	30.1	40.3
Balance	11	103	277	49	1,131	982	969	3,082	35.4	31.8	32.2	33.2
Central Highlands (SD)	58	1,162	3,577	531	22,637	17,688	14,188	54,513	62.8	50.7	39.6	51.1
Horsham (C)	15	319	976	71	5,680	4,993	3,759	14,432	57.4	52.2	38.0	49.2
Lowan (S)	4	66	176	15	845	641	717	2,203	41.3	32.4	35.0	36.3
Stawell (C)	8	139	452	41	1,847	1,509	1,206	4,562	42.9	36.2	28.0	35.7
Stawell (S)	9	180	549	71	3,533	2,425	2,131	8,089	63.3	44.9	38.2	48.8
St Arnaud (T)	4	41	118	15	426	494	478	1,398	33.5	40.2	37.6	37.1
Warracknabeal (S)	3	35	97	8	481	437	353	1,271	44.3	41.6	32.5	39.5
Balance	8	99	297	18	1,494	1,323	1,109	3,926	48.7	44.5	36.1	43.1
Wimmera (SD)	51	879	2,665	239	14,306	11,822	9,753	35,881	52.5	44.8	35.8	44.4

AND SELECTED STATISTICAL LOCAL AREAS, VICTORIA, DECEMBER QUARTER 1994 (a)

<i>Guest nights</i>				<i>Guest arrivals</i>				<i>Takings from accommodation (\$'000)</i>			
<i>Oct.</i>	<i>Nov.</i>	<i>Dec.</i>	<i>Dec. qtr</i>	<i>Oct.</i>	<i>Nov.</i>	<i>Dec.</i>	<i>Dec. qtr</i>	<i>Oct.</i>	<i>Nov.</i>	<i>Dec.</i>	<i>Dec. qtr</i>
2,547	2,502	2,137	7,186	1,474	1,646	1,432	4,552	123	122	105	350
6,370	6,427	5,612	18,409	4,669	4,566	4,176	13,411	294	309	231	834
1,898	1,806	1,404	5,108	1,189	1,055	811	3,055	60	62	46	168
1,372	1,149	1,076	3,597	851	785	699	2,335	52	49	42	143
2,286	2,099	2,182	6,567	1,209	1,303	1,116	3,628	133	128	117	378
2,543	2,565	1,958	7,066	1,000	873	930	2,803	118	111	103	333
6,215	5,220	7,215	18,650	3,444	3,077	4,167	10,688	297	269	371	937
2,086	2,041	1,617	5,744	1,568	1,619	1,188	4,375	106	98	85	288
8,360	5,628	6,892	20,880	3,928	3,206	3,846	10,980	296	227	270	793
1,409	1,925	1,580	4,914	624	1,047	747	2,418	62	74	71	207
2,092	2,249	1,933	6,274	1,238	1,316	1,316	3,551	62	59	53	174
3,010	2,816	2,341	8,167	1,483	1,420	1,195	4,098	226	220	145	591
4,173	3,049	2,461	9,683	1,194	1,195	939	3,328	214	181	135	529
2,922	2,702	2,738	8,362	1,665	1,520	1,623	4,808	150	168	140	458
220,837	222,281	197,663	640,781	85,808	90,914	82,365	259,087	17,231	16,961	13,286	47,478
85,740	80,375	76,011	242,126	39,813	36,881	36,015	112,709	5,734	5,459	5,101	16,294
1,373	1,366	1,661	4,400	849	894	1,007	2,750	59	52	63	173
5,286	4,942	4,175	14,403	2,761	2,862	2,181	7,804	262	250	202	714
3,657	3,527	3,361	10,545	1,459	1,394	1,356	4,209	171	175	132	478
11,503	10,828	9,674	32,005	4,468	4,454	3,941	12,863	836	786	680	2,302
1,933	1,797	1,672	5,402	1,178	1,163	1,213	3,554	95	106	77	279
19,013	17,616	16,981	53,610	8,173	8,304	8,849	25,326	962	901	796	2,659
40,017	40,312	30,694	111,023	15,095	15,482	15,205	45,782	2,784	2,878	2,343	8,005
3,296	3,440	3,115	9,851	1,388	1,318	1,234	3,940	235	235	201	671
3,576	3,278	2,481	9,335	1,886	1,711	1,310	4,907	296	282	188	766
2,819	2,996	3,118	8,933	1,531	1,499	1,841	4,871	105	109	99	314
42,669	38,948	37,370	118,987	24,847	23,020	22,037	69,904	2,419	2,262	2,036	6,717
489,002	473,884	429,122	1,392,008	214,792	214,524	202,420	631,736	33,381	32,532	27,120	93,034
1,897	1,923	2,067	5,887	1,581	1,620	1,832	5,033	59	63	60	183
1,087	752	838	2,677	350	298	344	992	37	27	24	88
8,728	8,341	5,965	23,034	5,326	5,066	4,199	14,591	432	463	302	1,197
2,926	2,312	2,287	7,525	1,677	1,677	1,690	5,044	106	82	78	266
2,558	2,599	2,218	7,375	1,823	1,926	1,664	5,413	116	117	108	342
15,299	14,004	11,308	40,611	9,176	8,967	7,897	26,040	691	690	512	1,893
1,860	1,623	3,088	6,571	1,394	1,079	1,710	4,183	53	53	81	187
6,859	6,667	7,073	20,599	4,682	4,302	4,436	13,420	226	220	248	694
12,949	14,538	17,908	45,395	7,302	7,706	8,638	23,646	552	714	547	1,813
2,768	2,961	3,131	8,860	2,276	2,019	2,002	6,297	98	103	109	310
41,632	41,716	44,575	127,923	26,411	25,693	26,515	78,619	1,679	1,842	1,558	5,079
1,072	1,304	1,165	3,541	662	766	802	2,230	38	46	36	120
5,137	5,438	4,117	14,692	3,424	3,576	2,788	9,788	185	189	135	508
431	477	553	1,461	243	287	351	881	9	14	13	36
2,670	2,604	2,930	8,204	2,377	2,283	2,498	7,158	91	89	95	275
885	842	1,108	2,835	654	632	724	2,010	20	21	24	65
2,554	1,958	2,365	6,877	1,626	1,313	1,348	4,287	93	72	77	242
4,202	4,834	4,329	13,365	2,646	3,218	2,758	8,622	139	167	138	444
14,249	12,848	13,947	41,044	10,799	9,716	9,837	30,352	503	451	476	1,429
1,166	1,183	1,252	3,601	916	915	937	2,768	29	30	34	93
32,366	31,488	31,766	95,620	23,347	22,706	22,043	68,096	1,107	1,078	1,028	3,213
2,133	1,945	1,575	5,653	1,832	1,669	1,448	4,949	76	71	58	204
29,645	19,614	15,398	64,657	18,480	13,832	10,656	42,968	930	701	486	2,116
7,961	4,927	5,028	17,916	5,029	3,724	3,549	12,302	272	199	172	643
37,606	24,541	20,426	82,573	23,509	17,556	14,205	55,270	1,202	900	658	2,760
3,438	3,182	3,069	9,689	2,242	2,128	1,959	6,329	140	127	120	387
2,328	1,037	1,005	4,370	1,673	873	853	3,399	54	27	25	106
2,262	1,854	1,883	5,999	1,756	1,383	1,410	4,549	77	79	63	220
47,767	32,559	27,958	108,284	31,012	23,609	19,875	74,496	1,550	1,203	924	3,677
8,754	7,264	6,154	22,172	6,672	5,795	5,179	17,646	320	267	218	805
1,639	1,228	1,546	4,413	1,359	976	1,128	3,463	42	33	36	111
3,814	2,659	2,317	8,790	2,529	1,738	1,581	5,848	108	80	65	254
7,546	5,196	4,816	17,558	4,129	2,987	2,586	9,702	247	160	147	554
609	681	680	1,970	548	535	455	1,538	19	21	20	60
832	691	602	2,125	600	486	477	1,563	20	19	14	53
2,287	1,889	1,641	5,817	1,676	1,440	1,239	4,355	64	57	48	169
25,481	19,608	17,756	62,845	17,513	13,957	12,645	44,115	821	638	548	2,006

TABLE 7 — HOTELS, MOTELS AND GUEST HOUSES WITH FACILITIES: STATISTICAL DIVISIONS

Statistical Divisions and selected Statistical Local Areas	Establish- ments	Guest rooms	Bed spaces	Employ- ment (persons)	Room nights occupied				Room occupancy rates (per cent)			
					Oct.	Nov.	Dec.	Dec. qtr	Oct.	Nov.	Dec.	Dec. qtr
Kerang (B)	3	52	151	18	522	492	483	1,497	32.4	31.5	30.0	31.3
Mildura (C)	30	890	2,763	315	16,618	12,307	10,667	39,592	62.3	46.1	38.7	48.9
Mildura (S) — Pts A and B	5	75	217	32	1,080	757	719	2,556	46.5	33.6	30.9	37.0
Swan Hill (C)	15	356	1,096	148	6,481	5,661	4,626	16,768	58.7	53.0	41.9	51.2
Swan Hill (S)	6	89	276	24	920	829	628	2,377	33.3	31.0	22.8	29.0
Balance	7	83	246	35	1,163	995	868	3,026	45.2	40.0	33.7	39.6
<i>Mallee (SD)</i>	<i>66</i>	<i>1,545</i>	<i>4,749</i>	<i>572</i>	<i>26,784</i>	<i>21,041</i>	<i>17,991</i>	<i>65,816</i>	<i>57.0</i>	<i>45.4</i>	<i>37.6</i>	<i>46.6</i>
Castlemaine (C)	3	48	142	12	780	771	497	2,048	52.4	53.5	33.4	46.4
Echuca (C)	18	407	1,246	147	8,092	6,196	5,873	20,161	64.1	50.7	46.5	53.8
Greater Bendigo (C)												
Central	25	535	1,659	220	9,620	8,872	6,086	24,578	58.0	55.3	36.7	49.9
Balance	5	117	389	88	1,899	1,859	1,387	5,145	52.4	53.0	38.2	47.8
Total	30	652	2,048	308	11,519	10,731	7,473	29,723	57.0	54.9	37.0	49.6
Korong (S)	3	38	123	4	225	172	187	584	19.1	15.1	15.9	16.7
Kyneton (S)	3	26	73	7	379	386	375	1,140	47.0	49.5	46.5	47.7
Maryborough (C)	7	80	224	29	974	1,002	757	2,733	39.3	41.8	30.5	37.1
Rochester (S)	3	51	150	20	901	682	739	2,322	57.0	44.6	46.7	49.5
Balance	17	219	632	91	2,095	1,782	1,691	5,568	30.9	27.1	24.9	27.6
<i>Loddon-Campaspe (SD)</i>	<i>84</i>	<i>1,521</i>	<i>4,638</i>	<i>618</i>	<i>24,965</i>	<i>21,722</i>	<i>17,592</i>	<i>64,279</i>	<i>52.9</i>	<i>47.6</i>	<i>37.3</i>	<i>45.9</i>
Alexandra (S)	21	481	1,359	237	5,010	4,682	4,298	13,990	33.6	32.4	28.8	31.6
Benalla (C)	8	130	412	22	2,423	2,195	1,729	6,347	60.1	56.3	42.9	53.1
Cobram (S)	5	80	235	27	1,070	1,127	959	3,156	43.1	47.0	38.7	42.9
Euroa (S)	3	41	115	11	508	494	475	1,477	40.0	40.2	37.4	39.2
Goulburn (S)	5	55	196	12	454	505	420	1,379	26.6	30.6	24.6	27.3
Kilmore (S)	3	42	119	7	451	320	272	1,043	34.6	25.4	20.9	27.0
Kyabram (T)	3	38	100	16	483	415	375	1,273	41.0	36.4	31.8	36.4
Mansfield (S) (b)	22	528	1,989	147	3,125	2,406	2,481	8,012	19.1	15.2	15.2	16.5
Numurkah (S)	3	39	120	6	441	376	378	1,195	36.5	32.1	31.3	33.3
Rodney (S) — Pts A and B	4	48	152	28	842	779	616	2,237	56.6	54.1	41.4	50.7
Seymour (S)	6	106	332	51	1,895	1,962	1,790	5,647	57.7	61.7	54.5	57.9
Shepparton (C)	17	475	1,397	197	7,379	7,482	5,285	20,146	50.1	52.5	35.9	46.1
Waranga (S)	3	20	51	17	100	67	91	258	16.1	11.2	14.7	14.0
Balance	9	115	337	47	1,343	1,340	1,228	3,911	37.7	38.8	34.4	37.0
<i>Goulburn (SD)</i>	<i>112</i>	<i>2,198</i>	<i>6,914</i>	<i>825</i>	<i>25,524</i>	<i>24,150</i>	<i>20,397</i>	<i>70,071</i>	<i>37.5</i>	<i>36.6</i>	<i>29.9</i>	<i>34.7</i>
Beechworth (S)	6	86	250	30	1,614	1,293	1,014	3,921	60.5	50.1	38.0	49.6
Bright (S) (b)	49	1,066	3,654	233	5,990	4,943	6,366	17,299	18.1	15.5	19.3	17.6
Myrtleford (S)	3	62	187	14	897	597	519	2,013	46.7	32.1	27.0	35.3
Rutherglen (S)	6	66	194	15	1,056	820	768	2,644	51.6	41.4	37.5	43.5
Upper Murray (S)	4	52	154	27	422	331	388	1,141	26.2	21.2	24.1	23.9
Wangaratta (C)	14	317	918	111	4,480	4,672	3,410	12,562	45.6	49.1	34.7	43.1
Wodonga (RC)	11	217	666	52	3,950	3,177	3,124	10,251	58.7	48.8	46.4	51.3
Yarrowonga (S)	7	148	446	38	1,275	1,269	1,318	3,862	27.8	28.6	28.7	28.4
Balance	4	69	230	13	841	739	489	2,069	39.3	35.7	22.9	32.6
<i>Ovens-Murray (SD)</i>	<i>104</i>	<i>2,083</i>	<i>6,699</i>	<i>533</i>	<i>20,525</i>	<i>17,841</i>	<i>17,396</i>	<i>55,762</i>	<i>31.8</i>	<i>28.6</i>	<i>26.9</i>	<i>29.1</i>
Bairnsdale (C)	13	244	675	99	3,392	2,914	3,098	9,404	44.8	39.8	41.0	41.9
Maffra (S)	3	33	94	18	318	299	231	848	31.1	30.2	22.6	27.9
Orbost (S)	13	176	562	68	2,362	1,976	2,052	6,390	43.3	37.4	37.6	39.5
Sale (C)	7	234	672	89	3,068	3,093	2,708	8,869	42.3	44.1	37.3	41.2
Tambo (S) — Pts A and B	26	540	1,643	176	6,361	5,661	6,471	18,493	38.0	34.9	38.7	37.2
Balance	7	86	309	20	679	642	767	2,088	25.5	24.9	28.8	26.4
<i>East Gippsland (SD)</i>	<i>69</i>	<i>1,313</i>	<i>3,955</i>	<i>470</i>	<i>16,180</i>	<i>14,585</i>	<i>15,327</i>	<i>46,092</i>	<i>39.8</i>	<i>37.0</i>	<i>37.7</i>	<i>38.2</i>
Alberton (S)	5	76	220	25	866	729	695	2,290	36.8	32.0	29.5	32.8
Bass (S)	4	37	108	29	436	358	541	1,335	38.0	32.3	47.2	39.2
Morwell (C) — Pts A & B	9	231	695	108	2,629	2,708	1,838	7,175	36.7	39.1	25.7	33.8
Phillip Island (S)	11	276	950	166	4,189	3,342	3,472	11,003	49.0	40.4	40.6	43.3
Rosedale (S)	5	119	298	16	766	735	603	2,104	20.8	20.6	16.3	19.2
South Gippsland (S)	6	92	266	43	855	908	1,039	2,802	30.0	32.9	36.4	33.1
Traralgon (C)	10	224	593	84	2,857	2,817	2,222	7,896	41.1	41.9	32.0	38.3
Warragul (RC)	4	54	142	43	610	630	629	1,869	36.4	38.9	37.6	37.6
Woorayl (S)	3	51	134	9	535	581	485	1,601	33.8	38.0	30.7	34.1
Balance	13	273	784	78	2,177	2,231	2,120	6,528	25.7	27.2	25.1	26.0
<i>Gippsland (SD)</i>	<i>70</i>	<i>1,433</i>	<i>4,190</i>	<i>601</i>	<i>15,920</i>	<i>15,039</i>	<i>13,644</i>	<i>44,603</i>	<i>35.8</i>	<i>35.0</i>	<i>30.7</i>	<i>33.8</i>
<i>Total Victoria</i>	<i>1,006</i>	<i>29,892</i>	<i>82,442</i>	<i>16,052</i>	<i>525,793</i>	<i>499,855</i>	<i>435,287</i>	<i>1,460,935</i>	<i>56.9</i>	<i>55.8</i>	<i>47.0</i>	<i>53.2</i>

(a) As from 1 July 1994, substantial changes have been made to Local Government Area boundaries in the Statistical Divisions of Barwon, Central Highlands and Loddon-
(b) Snow field resorts are included continuously as capacity (potentially) available irrespective of any off season closures. The average occupancy rates of establishments in

AND SELECTED STATISTICAL LOCAL AREAS, VICTORIA, DECEMBER QUARTER 1994 (a)—continued

Guest nights				Guest arrivals				Takings from accommodation (\$'000)			
Oct.	Nov.	Dec.	Dec. qtr	Oct.	Nov.	Dec.	Dec. qtr	Oct.	Nov.	Dec.	Dec. qtr
820	798	821	2,439	751	657	746	2,154	28	26	27	81
30,081	20,153	19,676	69,910	18,309	12,735	12,049	43,093	866	666	570	2,102
1,927	1,181	1,281	4,389	1,062	541	653	2,256	41	25	25	91
12,056	10,088	8,284	30,428	8,009	7,024	5,948	20,981	346	311	263	920
1,818	1,385	1,262	4,465	1,453	932	946	3,331	41	40	27	108
1,662	1,336	1,380	4,378	1,355	1,129	992	3,476	48	40	36	124
48,364	34,941	32,704	116,009	30,939	23,018	21,334	75,291	1,370	1,108	948	3,426
1,459	1,499	1,004	3,962	971	1,021	786	2,778	49	49	34	132
15,998	11,721	12,522	40,241	11,421	8,574	8,521	28,516	536	419	370	1,325
16,519	14,893	10,821	42,233	11,544	10,424	7,856	29,824	617	571	396	1,584
3,305	3,185	2,580	9,070	2,417	2,252	1,750	6,419	132	127	90	350
19,824	18,078	13,401	51,303	13,961	12,676	9,606	36,243	749	699	486	1,934
404	364	357	1,125	335	320	289	944	9	8	8	25
633	637	614	1,884	519	522	489	1,530	17	17	16	50
1,653	1,459	1,109	4,221	1,157	1,141	879	3,177	46	48	37	131
1,573	1,120	1,515	4,208	1,025	857	727	2,609	70	42	48	160
3,605	3,081	3,053	9,739	2,581	2,355	2,389	7,325	112	93	94	298
45,149	37,959	33,575	116,683	31,970	27,466	23,686	83,122	1,588	1,375	1,093	4,056
8,789	7,958	7,735	24,482	4,546	3,700	3,472	11,718	465	435	367	1,268
4,153	3,593	3,155	10,901	2,731	2,446	2,108	7,285	121	108	90	320
1,913	1,879	1,664	5,456	1,052	1,231	1,154	3,437	55	56	52	163
927	827	887	2,641	654	590	534	1,778	28	25	25	78
917	1,097	1,029	3,043	503	645	628	1,776	20	22	20	62
785	595	517	1,897	774	591	493	1,858	19	17	13	49
841	672	670	2,183	463	432	474	1,369	24	18	17	58
6,835	4,795	5,658	17,288	4,049	3,019	3,329	10,397	218	175	157	550
729	690	675	2,094	550	493	517	1,560	18	14	16	48
1,325	1,178	1,149	3,652	765	773	795	2,333	41	37	29	108
2,997	3,137	3,242	9,376	2,162	2,067	2,245	6,474	123	135	127	385
11,296	11,581	8,418	31,295	7,146	7,740	6,091	20,977	448	440	319	1,207
161	128	136	425	87	94	105	286	4	3	3	10
2,041	2,036	2,104	6,181	1,255	1,276	1,152	3,683	81	77	76	234
43,709	40,166	37,039	120,914	26,737	25,097	23,097	74,931	1,666	1,561	1,310	4,537
3,282	2,426	1,991	7,699	2,294	1,854	1,510	5,658	87	68	54	210
13,553	11,003	14,748	39,304	5,956	5,414	6,271	17,641	319	275	377	972
1,410	895	929	3,234	786	573	615	1,974	38	26	25	89
2,264	1,608	1,546	5,418	1,195	1,055	890	3,140	54	40	40	135
664	587	683	1,934	571	480	587	1,638	28	23	26	77
7,310	7,218	5,617	20,145	5,246	4,460	3,962	13,668	250	256	188	694
7,340	5,584	6,534	19,458	4,119	3,095	3,631	10,845	188	143	154	485
2,372	2,337	2,743	7,452	1,260	1,166	1,201	3,627	52	57	51	161
1,479	1,352	881	3,712	606	555	531	1,692	44	40	25	110
39,674	33,010	35,672	108,356	22,033	18,652	19,198	59,883	1,060	930	941	2,931
5,490	4,620	5,912	16,022	3,910	3,441	4,635	11,986	189	162	186	537
445	438	387	1,270	341	345	316	1,002	16	15	14	45
4,608	3,515	4,676	12,799	3,183	2,354	3,427	8,964	121	97	110	327
4,316	4,461	4,232	13,009	2,990	2,525	2,603	8,118	186	202	182	570
13,102	11,155	14,811	39,068	8,699	7,436	9,404	25,539	352	316	406	1,074
1,420	1,361	1,847	4,628	1,095	1,001	1,185	3,281	36	39	51	126
29,381	25,550	31,865	86,796	20,218	17,102	21,570	58,890	901	829	949	2,679
1,402	1,142	1,217	3,761	882	809	876	2,567	36	34	31	100
829	691	1,028	2,548	644	574	742	1,960	21	18	28	66
3,394	3,385	2,419	9,198	2,153	2,042	1,659	5,854	147	142	106	395
8,775	6,876	8,853	24,504	5,518	4,698	5,337	15,553	272	200	238	709
971	922	881	2,774	509	450	526	1,485	23	22	22	66
1,641	1,639	2,109	5,389	1,172	1,221	1,559	3,952	48	49	62	158
3,864	3,891	3,280	11,035	2,315	2,567	2,199	7,081	141	127	112	380
1,014	982	1,028	3,024	774	727	774	2,275	31	31	32	95
1,287	1,345	937	3,569	961	936	711	2,608	36	33	28	98
3,818	3,848	4,069	11,735	2,587	2,629	2,591	7,807	126	121	120	367
26,995	24,721	25,821	77,537	17,515	16,653	16,974	51,142	880	777	778	2,434
869,520	795,602	747,853	2,412,975	462,487	428,477	409,357	1,300,321	46,002	43,871	37,198	127,072

Campaspe in accordance with the Australian Standard Geographical Classification, Edition 2.4. Refer to pages 30 and 31 for details.

Bright (S) and Mansfield (S) actually remaining open during the snow fields off season, therefore, are significantly higher than the overall rates published.

TABLE 8 — HOLIDAY FLATS, UNITS AND HOUSES BY STATISTICAL DIVISION, VICTORIA

Particulars	Melbourne (SD)	Barwon (SD)	Western District (SD) and Central Highlands (SD)	Wimmera (SD)	Mallee (SD)	Loddon- Campaspe (SD)
LETTING ENTITIES, CAPACITY AND EMPLOYMENT						
<i>December quarter 1993—</i>						
Letting entities	39	22	14	8	9	6
Flats, units and houses						
Single bedroom	694	34	23	48	25	24
Multiple bedroom	626	341	100	52	72	25
<i>Total flats, units and houses</i>	<i>1,320</i>	<i>375</i>	<i>123</i>	<i>100</i>	<i>97</i>	<i>49</i>
Bed spaces	4,652	2,078	570	481	412	214
Employment (persons) (a)	255	59	38	34	18	21
<i>December quarter 1994—</i>						
Letting entities	39	23	13	10	7	5
Flats, units and houses						
Single bedroom	696	37	24	52	14	13
Multiple bedroom	627	365	96	65	69	21
<i>Total flats, units and houses</i>	<i>1,323</i>	<i>402</i>	<i>120</i>	<i>117</i>	<i>83</i>	<i>34</i>
Bed spaces	4,506	1,996	521	520	360	161
Employment (persons) (a)	314	61	37	30	16	11
UNIT NIGHT'S OCCUPIED						
<i>December quarter 1993</i>	<i>65,118</i>	<i>9,078</i>	<i>5,005</i>	<i>5,700</i>	<i>4,025</i>	<i>1,852</i>
<i>1994—</i>						
October	26,279	2,827	1,645	3,060	1,781	574
November	24,796	2,951	1,147	2,060	1,366	581
December	23,481	4,023	1,495	1,807	1,477	602
<i>December quarter 1994</i>	<i>74,556</i>	<i>9,801</i>	<i>4,287</i>	<i>6,927</i>	<i>4,624</i>	<i>1,757</i>
UNIT OCCUPANCY RATES (per cent)						
<i>December quarter 1993</i>	<i>54.7</i>	<i>26.3</i>	<i>44.2</i>	<i>62.0</i>	<i>45.1</i>	<i>41.1</i>
<i>1994—</i>						
October	64.1	22.7	44.2	84.4	69.2	54.5
November	62.5	24.5	31.9	58.7	54.9	57.0
December	57.3	32.3	40.2	49.8	57.4	57.1
<i>December quarter 1994</i>	<i>61.3</i>	<i>26.5</i>	<i>38.8</i>	<i>64.4</i>	<i>60.6</i>	<i>56.2</i>
UNIT LETTINGS						
<i>December quarter 1993</i>	<i>16,484</i>	<i>2,687</i>	<i>1,547</i>	<i>1,718</i>	<i>1,008</i>	<i>790</i>
<i>1994—</i>						
October	5,148	993	581	1,027	473	183
November	4,721	960	450	942	315	206
December	4,552	1,033	549	545	288	201
<i>December quarter 1994</i>	<i>14,421</i>	<i>2,986</i>	<i>1,580</i>	<i>2,514</i>	<i>1,076</i>	<i>590</i>
AVERAGE LENGTH OF STAY (days)						
<i>December quarter 1993</i>	<i>4.0</i>	<i>3.4</i>	<i>3.2</i>	<i>3.3</i>	<i>4.0</i>	<i>2.3</i>
<i>1994—</i>						
October	5.1	2.8	2.8	3.0	3.8	3.1
November	5.3	3.1	2.5	2.2	4.3	2.8
December	5.2	3.9	2.7	3.3	5.1	3.0
<i>December quarter 1994</i>	<i>5.2</i>	<i>3.3</i>	<i>2.7</i>	<i>2.8</i>	<i>4.3</i>	<i>3.0</i>
TAKINGS FROM ACCOMMODATION (\$'000)						
<i>December quarter 1993</i>	<i>5,891</i>	<i>628</i>	<i>270</i>	<i>354</i>	<i>209</i>	<i>94</i>
<i>1994—</i>						
October	2,547	209	81	202	86	30
November	2,324	210	74	135	62	31
December	2,175	320	98	116	73	31
<i>December quarter 1994</i>	<i>7,047</i>	<i>739</i>	<i>253</i>	<i>453</i>	<i>221</i>	<i>93</i>

TABLE 8—HOLIDAY FLATS, UNITS AND HOUSES BY STATISTICAL DIVISION, VICTORIA—continued

Particulars	Victoria					Real estate agents	Other letting entities	Total
	Goulburn (SD)	Ovens-Murray (SD)	East Gippsland (SD)	Gippsland (SD)	Gippsland (SD)			
LETTING ENTITIES, CAPACITY AND EMPLOYMENT								
<i>December quarter 1993—</i>								
Letting entities	7	41	50	8	23	181	204	
Flats, units and houses								
Single bedroom	18	58	81	27	44	988	1,032	
Multiple bedroom	42	366	420	270	823	1,491	2,314	
<i>Total flats, units and houses</i>	<i>60</i>	<i>424</i>	<i>501</i>	<i>297</i>	<i>867</i>	<i>2,479</i>	<i>3,346</i>	
Bed spaces	313	2,211	2,480	1,794	5,256	9,949	15,205	
Employment (persons) (a)	18	74	106	53	—	676	676	
<i>December quarter 1994—</i>								
Letting entities	7	38	49	9	23	177	200	
Flats, units and houses								
Single bedroom	15	76	80	35	58	984	1,042	
Multiple bedroom	47	339	401	233	776	1,487	2,263	
<i>Total flats, units and houses</i>	<i>62</i>	<i>415</i>	<i>481</i>	<i>268</i>	<i>834</i>	<i>2,471</i>	<i>3,305</i>	
Bed spaces	320	2,162	2,390	1,637	4,807	9,766	14,573	
Employment (persons) (a)	23	71	109	58	—	730	730	
UNIT NIGHTS OCCUPIED								
<i>December quarter 1993</i>	<i>1,645</i>	<i>7,284</i>	<i>13,972</i>	<i>5,128</i>	<i>6,450</i>	<i>112,357</i>	<i>118,807</i>	
<i>1994—</i>								
October	920	2,691	4,436	1,717	2,049	43,881	45,930	
November	636	2,505	4,118	1,947	2,298	39,809	42,107	
December	636	2,703	4,730	2,466	4,091	39,329	43,420	
<i>December quarter 1994</i>	<i>2,192</i>	<i>7,899</i>	<i>13,284</i>	<i>6,130</i>	<i>8,438</i>	<i>123,019</i>	<i>131,457</i>	
UNIT OCCUPANCY RATES (per cent)								
<i>December quarter 1993</i>	<i>29.8</i>	<i>18.8</i>	<i>30.3</i>	<i>18.8</i>	<i>8.1</i>	<i>49.9</i>	<i>38.9</i>	
<i>1994—</i>								
October	47.9	20.9	29.7	20.7	7.9	57.3	44.8	
November	34.2	20.1	28.5	24.2	9.2	53.7	42.5	
December	33.1	21.0	31.7	29.7	15.8	51.3	42.4	
<i>December quarter 1994</i>	<i>38.4</i>	<i>20.7</i>	<i>30.0</i>	<i>24.9</i>	<i>11.0</i>	<i>54.1</i>	<i>43.2</i>	
UNIT LETTINGS								
<i>December quarter 1993</i>	<i>747</i>	<i>2,069</i>	<i>3,664</i>	<i>1,260</i>	<i>1,033</i>	<i>30,941</i>	<i>31,974</i>	
<i>1994—</i>								
October	347	803	1,277	488	294	11,026	11,320	
November	291	718	1,198	584	332	10,053	10,385	
December	219	706	1,217	544	620	9,234	9,854	
<i>December quarter 1994</i>	<i>857</i>	<i>2,227</i>	<i>3,692</i>	<i>1,616</i>	<i>1,246</i>	<i>30,313</i>	<i>31,559</i>	
AVERAGE LENGTH OF STAY (days)								
<i>December quarter 1993</i>	<i>2.2</i>	<i>3.5</i>	<i>3.8</i>	<i>4.1</i>	<i>6.2</i>	<i>3.6</i>	<i>3.7</i>	
<i>1994—</i>								
October	2.7	3.4	3.5	3.5	7.0	4.0	4.1	
November	2.2	3.5	3.4	3.3	6.9	4.0	4.1	
December	2.9	3.8	3.9	4.5	6.6	4.3	4.4	
<i>December quarter 1994</i>	<i>2.6</i>	<i>3.5</i>	<i>3.6</i>	<i>3.8</i>	<i>6.8</i>	<i>4.1</i>	<i>4.2</i>	
TAKINGS FROM ACCOMMODATION (\$'000)								
<i>December quarter 1993</i>	<i>96</i>	<i>331</i>	<i>715</i>	<i>295</i>	<i>329</i>	<i>8,555</i>	<i>8,884</i>	
<i>1994—</i>								
October	59	128	211	107	135	3,526	3,661	
November	47	110	207	144	167	3,177	3,344	
December	49	137	306	151	260	3,196	3,456	
<i>December quarter 1994</i>	<i>155</i>	<i>374</i>	<i>723</i>	<i>401</i>	<i>562</i>	<i>9,899</i>	<i>10,461</i>	

(a) Employment numbers exclude real estate agents and their employees.

TABLE 9 — CARAVAN PARKS: STATISTICAL DIVISIONS AND SELECTED

Statistical Divisions and Selected Statistical Local Areas	Establish- ments	Capacity				Cabins, flats, etc.	Total	Sites occupied by long- term guests	Other sites perman- ently reserved	Employ- ment (persons)
		On-site vans	Other powered sites	Unpow- ered sites						
Cranbourne (S)	5	29	253	26	106	414	204	35	18	
Flinders (S)	38	114	3,530	538	91	4,273	181	1,899	109	
Hastings (S)	7	30	338	291	7	666	93	121	21	
Healesville (S)	3	11	154	19	30	214	58	19	16	
Springvale (C)	5	241	457	80	10	788	496	—	31	
Upper Yarra (S) — Pt A	3	10	184	205	9	408	72	36	6	
Werribee (C)	4	16	203	20	20	259	153	6	15	
Balance	27	501	1,719	113	393	2,726	1,299	35	129	
<i>Melbourne (SD)</i>	<i>92</i>	<i>952</i>	<i>6,838</i>	<i>1,292</i>	<i>666</i>	<i>9,748</i>	<i>2,556</i>	<i>2,151</i>	<i>345</i>	
Colac (C)	3	24	96	18	3	141	30	4	8	
Greater Geelong City Part A (SSD)										
Bellarine — Inner	4	36	397	10	66	509	136	203	16	
South Barwon — Inner	7	105	472	55	65	697	324	9	26	
Total	11	141	869	65	131	1,206	460	212	42	
Greater Geelong (C) — Pts B and C	15	17	3,608	341	206	4,172	44	1,807	92	
Otway (S)	11	42	542	324	67	975	6	199	28	
Queenscliffe (B)	9	1	879	—	26	906	15	440	27	
Surf Coast (S) — Pts A and B	15	61	2,732	146	53	2,992	18	865	80	
<i>Barwon (SD)</i>	<i>64</i>	<i>286</i>	<i>8,726</i>	<i>894</i>	<i>486</i>	<i>10,392</i>	<i>573</i>	<i>3,527</i>	<i>277</i>	
Heywood (S)	4	14	131	210	12	367	5	6	6	
Port Fairy (B)	6	20	922	696	35	1,673	10	44	14	
Portland (C)	5	41	397	66	41	545	61	6	19	
Warrnambool (C)	6	41	1,302	69	131	1,543	64	13	58	
Warrnambool (S)	3	16	201	54	9	280	—	3	11	
Balance	20	35	639	486	38	1,198	53	82	38	
<i>Western District (SD)</i>	<i>44</i>	<i>167</i>	<i>3,592</i>	<i>1,581</i>	<i>266</i>	<i>5,606</i>	<i>193</i>	<i>154</i>	<i>146</i>	
Ballarat City (SSD)	8	91	626	373	81	1,171	114	71	41	
Moorabool (S) — East	4	10	153	31	18	212	23	89	6	
Balance	12	61	541	239	33	874	81	124	20	
<i>Central Highlands (SD)</i>	<i>24</i>	<i>162</i>	<i>1,320</i>	<i>643</i>	<i>132</i>	<i>2,257</i>	<i>218</i>	<i>284</i>	<i>67</i>	
Stawell (S)	5	25	402	525	112	1,064	1	90	33	
Wimmera (S)	4	17	44	26	19	106	—	—	9	
Balance	18	76	725	537	67	1,405	86	42	41	
<i>Wimmera (SD)</i>	<i>27</i>	<i>118</i>	<i>1,171</i>	<i>1,088</i>	<i>198</i>	<i>2,575</i>	<i>87</i>	<i>132</i>	<i>83</i>	
Kerang (B) and Kerang (S)	8	43	306	212	25	586	27	83	15	
Mildura (C)	13	197	832	302	151	1,482	234	16	62	
Mildura (S) — Pts A and B	8	68	503	141	53	765	115	2	20	
Swan Hill (C)	5	36	411	136	73	656	33	18	33	
Swan Hill (S)	6	54	268	198	16	536	26	7	15	
Balance	7	12	172	188	6	378	18	3	10	
<i>Mallee (SD)</i>	<i>47</i>	<i>410</i>	<i>2,492</i>	<i>1,177</i>	<i>324</i>	<i>4,403</i>	<i>453</i>	<i>129</i>	<i>155</i>	
Echuca (C)	5	68	567	117	40	792	90	196	24	
Greater Bendigo (C)										
Marong — Inner	4	48	197	103	29	377	74	33	13	
Balance	5	78	420	214	55	767	152	45	23	
Total	9	126	617	317	84	1,144	226	78	36	
Korong (S)	4	17	138	66	10	231	42	10	6	
McIvor (S)	3	13	658	92	—	763	13	502	13	
Rochester (S)	3	12	139	26	5	182	25	77	6	
Balance	22	82	1,799	616	51	2,548	184	909	49	
<i>Loddon-Campaspe (SD)</i>	<i>46</i>	<i>318</i>	<i>3,918</i>	<i>1,234</i>	<i>190</i>	<i>5,660</i>	<i>580</i>	<i>1,772</i>	<i>134</i>	

STATISTICAL LOCAL AREAS, VICTORIA, DECEMBER QUARTER 1994 (a)

<i>Site nights occupied</i>				<i>Site occupancy rates (per cent)</i>				<i>Takings from accommodation (\$'000)</i>			
<i>Oct.</i>	<i>Nov.</i>	<i>Dec.</i>	<i>Dec. qtr</i>	<i>Oct.</i>	<i>Nov.</i>	<i>Dec.</i>	<i>Dec. qtr</i>	<i>Oct.</i>	<i>Nov.</i>	<i>Dec.</i>	<i>Dec. qtr</i>
9,818	9,154	9,575	28,547	76.5	73.7	74.6	75.0	101	99	113	312
64,362	73,492	95,388	233,242	48.6	57.3	72.0	59.3	345	388	565	1,299
6,715	6,814	7,977	21,506	32.5	34.1	38.6	35.1	54	53	59	167
3,776	3,687	3,697	11,160	56.9	57.4	55.7	56.7	44	37	38	120
16,924	16,450	17,467	50,841	69.3	69.6	71.5	70.1	208	185	203	596
3,964	3,855	4,109	11,928	31.3	31.5	32.5	31.8	29	32	34	96
5,460	5,185	5,252	15,897	68.0	66.7	65.4	66.7	44	42	41	127
57,979	55,894	57,358	171,231	68.6	68.3	67.9	68.3	764	729	769	2,263
168,998	174,531	200,823	544,352	55.9	59.7	66.5	60.7	1,590	1,566	1,824	4,979
1,284	1,142	1,383	3,809	29.4	27.0	31.6	29.4	9	7	9	25
11,036	10,944	11,626	33,606	69.9	71.7	73.7	71.8	136	82	87	304
11,677	12,387	13,513	37,577	54.0	59.2	62.5	58.6	116	124	149	388
22,713	23,331	25,139	71,183	60.8	64.5	67.2	64.2	232	203	236	693
61,631	60,737	73,026	195,394	47.7	48.5	56.5	50.9	564	260	419	1,244
7,251	7,467	12,980	27,698	24.0	25.5	42.9	30.9	67	84	139	290
15,277	15,124	17,549	47,950	54.4	55.6	62.5	57.5	93	134	120	348
30,391	30,386	54,819	115,596	32.8	33.9	59.1	42.0	388	442	445	1,274
138,547	138,187	184,896	461,630	43.0	44.3	57.4	48.3	1,372	1,133	1,368	3,874
796	667	1,376	2,839	7.0	6.1	12.1	8.4	13	12	20	46
2,601	2,813	6,297	11,711	5.0	5.6	12.1	7.6	39	57	127	223
2,790	2,695	3,063	8,548	16.5	16.5	18.1	17.0	31	35	43	109
7,086	6,782	13,987	27,855	14.8	14.7	29.2	19.6	155	148	305	608
418	547	1,586	2,551	4.8	6.5	18.3	9.9	8	9	29	46
6,453	6,683	7,852	20,988	17.4	18.6	21.1	19.0	56	56	78	190
20,144	20,187	34,161	74,492	11.6	12.0	19.7	14.4	303	316	602	1,222
10,563	10,252	10,488	31,303	29.1	29.2	28.9	29.1	135	124	123	382
3,839	3,556	4,339	11,734	58.4	55.9	66.0	60.2	22	19	30	71
7,523	7,629	8,537	23,689	27.8	29.1	31.5	29.5	44	49	59	152
21,925	21,437	23,364	66,726	31.3	31.7	33.4	32.1	201	193	212	605
10,520	7,397	8,334	26,251	31.9	23.2	25.3	26.8	199	130	165	494
610	209	475	1,294	18.6	6.6	14.5	13.3	17	10	15	42
6,702	6,307	6,431	19,440	15.4	15.0	14.8	15.0	78	65	68	210
17,832	13,913	15,240	46,985	22.3	18.0	19.1	19.8	294	204	248	746
4,209	4,167	4,476	12,852	23.2	23.7	24.6	23.8	24	23	26	73
16,283	12,722	13,963	42,968	35.4	28.6	30.4	31.5	248	178	234	660
5,494	5,293	5,956	16,743	23.2	23.1	25.1	23.8	52	51	62	165
4,695	3,739	4,093	12,527	23.1	19.0	20.1	20.8	79	53	87	219
1,870	1,502	2,699	6,071	11.3	9.3	16.2	12.3	20	14	28	62
916	976	984	2,876	7.8	8.6	8.4	8.3	6	7	7	20
33,467	28,399	32,171	94,037	24.5	21.5	23.6	23.2	430	325	443	1,198
11,971	10,785	12,505	35,261	48.8	45.4	50.9	48.4	126	106	139	371
4,175	4,438	4,161	12,774	35.7	39.2	35.6	36.8	46	48	50	144
8,939	8,057	7,840	24,836	37.6	35.0	33.0	35.2	111	94	93	298
13,114	12,495	12,001	37,610	37.0	36.4	33.8	35.7	156	142	143	442
1,592	1,818	1,742	5,152	22.2	26.2	24.3	24.2	10	12	11	33
16,786	16,031	16,255	49,072	71.0	70.0	68.7	69.9	30	32	58	119
3,454	3,316	3,487	10,257	61.2	60.7	61.8	61.3	15	12	14	42
38,279	37,468	40,807	116,554	48.5	49.0	51.7	49.7	229	170	276	676
85,196	81,913	86,797	253,906	48.6	48.2	49.5	48.8	567	474	641	1,682

TABLE 9 — CARAVAN PARKS: STATISTICAL DIVISIONS AND SELECTED

Statistical Divisions and Selected Statistical Local Areas	Capacity					Cabins, flats, etc.	Total	Sites occupied by long-term guests	Other sites permanently reserved	Employment (persons)
	Establishments	On-site vans	Other powered sites	Unpowered sites	Unpowered sites					
Alexandra (S)	12	55	1,033	550	50	1,688	38	691	57	
Benalla (S)	3	20	88	52	1	161	19	20	7	
Cobram (S)	5	33	420	570	17	1,040	39	275	17	
Goulburn (S)	4	23	564	114	10	711	49	540	14	
Mansfield (S)	8	30	843	134	76	1,083	8	662	40	
Nathalia (S)	5	18	227	95	8	348	30	119	11	
Rodney (S) — Pts A and B	6	99	268	39	21	427	67	12	14	
Shepparton (C)	5	36	427	79	48	590	159	102	14	
Waranga (S)	3	22	163	190	2	377	19	95	8	
Balance	16	122	740	318	72	1,252	254	152	35	
<i>Goulburn (SD)</i>	<i>67</i>	<i>458</i>	<i>4,773</i>	<i>2,141</i>	<i>305</i>	<i>7,677</i>	<i>682</i>	<i>2,668</i>	<i>217</i>	
Beechworth (S)	3	28	161	110	28	327	13	51	10	
Bright (S)	16	88	1,347	550	159	2,144	7	486	45	
Oxley (S)	4	19	85	102	8	214	7	12	6	
Tallangatta (S) - Pts A and B	5	17	325	181	15	538	8	85	8	
Wangaratta (C)	3	51	255	95	31	432	33	18	9	
Wodonga (RC)	4	44	371	128	18	561	103	144	10	
Yarrawonga (S)	5	14	545	181	37	777	57	121	21	
Balance	8	45	442	334	25	846	64	65	16	
<i>Ovens Murray (SD)</i>	<i>48</i>	<i>306</i>	<i>3,531</i>	<i>1,681</i>	<i>321</i>	<i>5,839</i>	<i>292</i>	<i>982</i>	<i>125</i>	
Avon (S)	5	26	97	72	4	199	10	8	14	
Bairnsdale (S) — Pts A and B	8	60	664	202	31	957	84	336	23	
Maffra (S)	6	8	396	249	6	659	15	238	20	
Orbost (S)	13	91	841	662	45	1,639	27	106	36	
Tambo (S) — Pts A and B	37	193	1,306	340	243	2,082	125	337	136	
Balance	6	54	421	260	32	767	90	90	21	
<i>East Gippsland (SD)</i>	<i>75</i>	<i>432</i>	<i>3,725</i>	<i>1,785</i>	<i>361</i>	<i>6,303</i>	<i>351</i>	<i>1,115</i>	<i>250</i>	
Alberton (S)	8	32	444	154	22	652	14	255	22	
Bass (S)	6	23	407	66	6	502	13	306	12	
Buln Buln (S)	5	37	181	105	37	360	60	46	10	
Phillip Island (S)	13	89	1,207	92	47	1,435	10	718	54	
Rosedale (S)	3	22	382	81	8	493	13	121	8	
South Gippsland (S)	9	33	336	375	33	777	19	281	21	
Traralgon (C)	4	54	387	—	44	485	158	6	6	
Wonthaggi (B)	3	22	305	31	4	362	40	75	6	
Woorayl (S)	7	17	647	176	20	860	15	388	30	
Balance	8	41	499	256	31	827	139	80	21	
<i>Gippsland (SD)</i>	<i>66</i>	<i>370</i>	<i>4,795</i>	<i>1,336</i>	<i>252</i>	<i>6,753</i>	<i>481</i>	<i>2,276</i>	<i>190</i>	
<i>Victoria</i>										
Short-term parks	436	2,075	36,263	12,680	2,359	53,377	1,716	14,850	1,477	
Long-term parks	164	1,904	8,618	2,172	1,142	13,836	4,750	340	512	
Total	600	3,979	44,881	14,852	3,501	67,213	6,466	15,190	1,989	

(a) As from 1 July 1994, substantial changes have been made to Local Government Area boundaries in the Statistical Divisions of Barwon, Central Highlands and Loddon.

STATISTICAL LOCAL AREAS, VICTORIA, DECEMBER QUARTER 1994 (a)—continued

<i>Site nights occupied</i>				<i>Site occupancy rates (per cent)</i>				<i>Takings from accommodation (\$'000)</i>			
<i>Oct.</i>	<i>Nov.</i>	<i>Dec.</i>	<i>Dec. qtr</i>	<i>Oct.</i>	<i>Nov.</i>	<i>Dec.</i>	<i>Dec. qtr</i>	<i>Oct.</i>	<i>Nov.</i>	<i>Dec.</i>	<i>Dec. qtr</i>
24,807	24,211	26,365	75,383	47.4	47.8	50.4	48.5	103	104	123	330
1,681	1,470	1,376	4,527	33.7	30.4	27.6	30.6	8	6	4	19
10,530	10,094	10,403	31,027	32.7	32.4	32.3	32.4	29	28	40	97
18,560	17,946	18,864	55,370	84.2	84.1	85.6	84.6	87	52	57	196
21,957	21,176	23,228	66,361	65.4	65.2	69.2	66.6	109	107	202	418
4,961	4,754	5,841	15,556	46.0	45.5	54.1	48.6	11	15	18	44
2,970	2,966	3,222	9,158	22.4	23.2	24.3	23.3	34	34	38	107
8,967	8,738	9,302	27,007	49.0	49.4	50.9	49.8	64	66	70	199
3,850	3,711	3,941	11,502	32.9	32.8	33.7	33.2	4	4	21	29
14,186	14,511	15,197	43,894	36.6	38.6	39.2	38.1	104	101	111	317
<i>112,469</i>	<i>109,577</i>	<i>117,739</i>	<i>339,785</i>	<i>47.3</i>	<i>47.6</i>	<i>49.5</i>	<i>48.1</i>	<i>554</i>	<i>518</i>	<i>685</i>	<i>1,757</i>
2,853	2,894	3,080	8,827	28.1	29.5	30.4	29.3	23	24	30	76
16,447	16,848	24,595	57,890	24.7	26.2	37.0	29.3	114	108	224	445
764	772	900	2,436	11.5	12.0	13.6	12.4	6	5	7	18
3,247	3,408	3,672	10,327	19.5	21.1	22.0	20.9	22	16	26	64
2,550	2,646	2,464	7,660	19.0	20.4	18.4	19.3	41	37	35	113
9,551	9,135	10,064	28,750	54.9	54.3	57.9	55.7	47	44	62	153
9,834	7,051	9,193	26,078	40.8	30.2	38.2	36.5	79	74	93	245
5,779	5,458	5,813	17,050	22.0	21.5	22.2	21.9	36	33	39	108
<i>51,025</i>	<i>48,212</i>	<i>59,781</i>	<i>159,018</i>	<i>28.2</i>	<i>27.5</i>	<i>33.0</i>	<i>29.6</i>	<i>367</i>	<i>339</i>	<i>517</i>	<i>1,223</i>
898	794	1,099	2,791	14.6	13.3	17.8	15.2	13	8	16	36
14,273	13,702	14,673	42,648	48.1	47.7	49.5	48.4	89	76	87	252
8,203	8,509	9,386	26,098	40.2	43.0	45.9	43.0	23	38	25	86
8,194	7,782	16,949	32,925	16.1	15.8	33.4	21.8	59	52	167	279
19,375	18,014	24,970	62,359	30.0	28.8	38.7	32.6	182	154	338	674
6,885	6,533	7,280	20,698	29.0	28.4	30.6	29.3	61	56	79	197
<i>57,828</i>	<i>55,334</i>	<i>74,357</i>	<i>187,519</i>	<i>29.6</i>	<i>29.3</i>	<i>38.1</i>	<i>32.3</i>	<i>428</i>	<i>385</i>	<i>712</i>	<i>1,525</i>
9,408	9,274	10,714	29,396	46.5	47.4	53.0	49.0	36	35	56	128
9,993	9,677	10,277	29,947	64.2	64.3	66.0	64.8	43	40	49	132
3,642	3,655	3,703	11,000	32.6	33.8	33.2	33.2	27	26	27	79
24,255	23,579	27,150	74,984	54.5	54.8	61.0	56.8	197	128	223	549
4,528	4,294	7,328	16,150	29.6	29.0	47.9	35.6	14	13	50	77
10,049	10,229	11,316	31,594	41.7	43.9	47.0	44.2	49	60	58	168
5,214	5,064	5,314	15,592	34.7	34.8	35.3	34.9	40	36	38	114
3,781	3,675	5,016	12,472	33.7	33.8	44.7	37.4	21	23	45	89
12,751	12,592	14,967	40,310	47.8	48.8	56.1	50.9	65	68	103	237
7,190	7,182	7,402	21,774	28.0	28.9	28.9	28.6	40	41	46	126
<i>90,811</i>	<i>89,221</i>	<i>103,187</i>	<i>283,219</i>	<i>43.4</i>	<i>44.0</i>	<i>49.3</i>	<i>45.6</i>	<i>533</i>	<i>470</i>	<i>696</i>	<i>1,699</i>
610,142	596,848	739,806	1,946,796	36.9	37.3	44.7	39.6	4,650	4,009	5,843	14,503
188,100	184,063	192,710	564,873	43.9	44.3	44.9	44.4	1,987	1,914	2,104	6,006
798,242	780,911	932,516	2,511,669	38.3	38.7	44.8	40.6	6,638	5,924	7,947	20,509

Campospe in accordance with the Australian Standard Geographical Classification, Edition 2.4. Refer to pages 30 and 31 for details.

TABLE 10 — CARAVAN PARKS BY STATISTICAL DIVISION, VICTORIA

Particulars	Melbourne (SD)			Barwon (SD)			Western Districts (SD)			Central Highlands (SD)		
	Short-term	Long-term	Total	Short-term	Long-term	Total	Short-term	Long-term	Total	Short-term	Long-term	Total
ESTABLISHMENTS, CAPACITY AND EMPLOYMENT												
<i>December quarter 1993—</i>												
Establishments	50	42	92	52	11	63	31	13	44	18	6	24
Capacity												
On-site vans	179	836	1,015	180	110	290	88	77	165	101	45	146
Other powered sites	4,113	2,800	6,913	8,014	679	8,693	2,983	631	3,614	1,267	174	1,441
Unpowered sites	951	298	1,249	923	44	967	1,553	171	1,724	750	46	796
Cabins, flats, etc.	200	270	470	387	80	467	206	53	259	91	46	137
<i>Total capacity</i>	<i>5,443</i>	<i>4,204</i>	<i>9,647</i>	<i>9,504</i>	<i>913</i>	<i>10,417</i>	<i>4,830</i>	<i>932</i>	<i>5,762</i>	<i>2,209</i>	<i>311</i>	<i>2,520</i>
Sites occupied by long-term guests	241	2,326	2,567	200	352	552	77	116	193	141	95	236
Other sites permanently reserved (a)	2,072	127	2,199	3,410	20	3,430	109	12	121	267	9	276
Employment (persons)	156	183	339	225	38	263	106	32	138	52	15	67
<i>December quarter 1994—</i>												
Establishments	53	39	92	53	11	64	30	14	44	16	8	24
Capacity												
On-site vans	224	728	952	153	133	286	78	89	167	97	65	162
Other powered sites	4,266	2,572	6,838	8,048	678	8,726	3,090	502	3,592	1,037	283	1,320
Unpowered sites	991	301	1,292	819	75	894	1,414	167	1,581	542	101	643
Cabins, flats, etc.	228	438	666	402	84	486	209	57	266	80	52	132
<i>Total capacity</i>	<i>5,709</i>	<i>4,039</i>	<i>9,748</i>	<i>9,422</i>	<i>970</i>	<i>10,392</i>	<i>4,791</i>	<i>815</i>	<i>5,606</i>	<i>1,756</i>	<i>501</i>	<i>2,257</i>
Sites occupied by long-term guests	293	2,263	2,556	149	424	573	52	141	193	110	108	218
Other sites permanently reserved (a)	2,083	68	2,151	3,517	10	3,527	139	15	154	263	21	284
Employment (persons)	175	170	345	238	39	277	96	50	146	50	17	67
SITE NIGHTS OCCUPIED ('000) (a)												
<i>December quarter 1993</i>	<i>271.8</i>	<i>259.5</i>	<i>531.3</i>	<i>418.9</i>	<i>42.9</i>	<i>461.8</i>	<i>49.6</i>	<i>18.2</i>	<i>67.8</i>	<i>52.0</i>	<i>12.2</i>	<i>64.2</i>
<i>1994—</i>												
October	83.1	85.9	169.0	123.4	15.2	138.5	13.4	6.7	20.1	16.7	5.3	21.9
November	91.2	83.3	174.5	122.3	15.9	138.2	13.8	6.4	20.2	16.3	5.2	21.4
December	114.8	86.0	200.8	167.4	17.5	184.9	26.5	7.6	34.2	18.1	5.2	23.4
<i>December quarter 1994</i>	<i>289.1</i>	<i>255.3</i>	<i>544.4</i>	<i>413.1</i>	<i>48.5</i>	<i>461.6</i>	<i>53.7</i>	<i>20.8</i>	<i>74.5</i>	<i>51.1</i>	<i>15.6</i>	<i>66.7</i>
SITE OCCUPANCY RATES (per cent) (a)												
<i>December quarter 1993</i>	<i>54.3</i>	<i>67.1</i>	<i>59.9</i>	<i>47.9</i>	<i>51.0</i>	<i>48.2</i>	<i>11.2</i>	<i>21.2</i>	<i>12.8</i>	<i>25.6</i>	<i>42.8</i>	<i>27.7</i>
<i>1994—</i>												
October	46.9	68.6	55.9	42.2	50.5	43.0	9.0	26.6	11.6	30.6	33.8	31.3
November	53.3	68.8	59.7	43.3	54.5	44.3	9.6	26.3	12.0	30.9	34.3	31.7
December	64.9	68.7	66.5	57.3	58.1	57.4	17.9	30.2	19.7	33.3	33.6	33.4
<i>December quarter 1994</i>	<i>55.0</i>	<i>68.7</i>	<i>60.7</i>	<i>47.7</i>	<i>54.3</i>	<i>48.3</i>	<i>12.2</i>	<i>27.7</i>	<i>14.4</i>	<i>31.6</i>	<i>33.9</i>	<i>32.1</i>
TAKINGS FROM ACCOMMODATION (\$'000)												
<i>December quarter 1993</i>	<i>1,855</i>	<i>2,865</i>	<i>4,720</i>	<i>3,143</i>	<i>417</i>	<i>3,561</i>	<i>860</i>	<i>195</i>	<i>1,056</i>	<i>477</i>	<i>135</i>	<i>612</i>
<i>1994—</i>												
October	598	992	1,590	1,223	149	1,372	220	84	303	147	54	201
November	605	961	1,566	978	155	1,133	242	74	316	140	53	193
December	809	1,014	1,824	1,180	189	1,368	507	95	602	157	55	212
<i>December quarter 1994</i>	<i>2,012</i>	<i>2,967</i>	<i>4,979</i>	<i>3,381</i>	<i>493</i>	<i>3,874</i>	<i>969</i>	<i>252</i>	<i>1,222</i>	<i>443</i>	<i>162</i>	<i>605</i>

TABLE 10 — CARAVAN PARKS BY STATISTICAL DIVISION, VICTORIA—continued

Particulars	Wimmera (SD)			Mallee (SD)			Loddon-Campaspe (SD)			Goulburn (SD)		
	Short-term	Long-term	Total	Short-term	Long-term	Total	Short-term	Long-term	Total	Short-term	Long-term	Total
ESTABLISHMENTS, CAPACITY AND EMPLOYMENT												
<i>December quarter 1993—</i>												
Establishments	22	5	27	31	15	46	34	13	47	47	21	68
Capacity												
On-site vans	n.p.	n.p.	119	219	178	397	186	141	327	205	209	414
Other powered sites	n.p.	n.p.	1,181	1,393	902	2,295	3,276	612	3,888	4,007	754	4,761
Unpowered sites	n.p.	n.p.	980	814	260	1,074	986	347	1,333	1,973	191	2,164
Cabins, flats, etc.	n.p.	n.p.	173	209	90	299	131	46	177	186	105	291
<i>Total capacity</i>	<i>n.p.</i>	<i>n.p.</i>	<i>2,453</i>	<i>2,635</i>	<i>1,430</i>	<i>4,065</i>	<i>4,579</i>	<i>1,146</i>	<i>5,725</i>	<i>6,371</i>	<i>1,259</i>	<i>7,630</i>
Sites occupied by long-term guests	n.p.	n.p.	89	150	320	470	259	317	576	295	384	679
Other sites permanently reserved (a)	n.p.	n.p.	117	100	10	110	1,716	65	1,781	2,653	38	2,691
Employment (persons)	n.p.	n.p.	86	106	49	155	113	50	163	170	46	216
<i>December quarter 1994—</i>												
Establishments	22	5	27	28	19	47	32	14	46	44	23	67
Capacity												
On-site vans	99	19	118	221	189	410	163	155	318	197	261	458
Other powered sites	918	253	1,171	1,465	1,027	2,492	3,249	669	3,918	3,908	865	4,773
Unpowered sites	979	109	1,088	862	315	1,177	903	331	1,234	1,837	304	2,141
Cabins, flats, etc.	156	42	198	224	100	324	140	50	190	181	124	305
<i>Total capacity</i>	<i>2,152</i>	<i>423</i>	<i>2,575</i>	<i>2,772</i>	<i>1,631</i>	<i>4,403</i>	<i>4,455</i>	<i>1,205</i>	<i>5,660</i>	<i>6,123</i>	<i>1,554</i>	<i>7,677</i>
Sites occupied by long-term guests	29	58	87	106	347	453	259	321	580	262	420	682
Other sites permanently reserved (a)	125	7	132	119	10	129	1,705	67	1,772	2,624	44	2,668
Employment (persons)	66	17	83	100	55	155	95	39	134	163	54	217
SITE NIGHTS OCCUPIED ('000) (a)												
<i>December quarter 1993</i>	<i>n.p.</i>	<i>n.p.</i>	<i>46.7</i>	<i>48.3</i>	<i>40.5</i>	<i>88.7</i>	<i>209.5</i>	<i>40.5</i>	<i>250.0</i>	<i>292.7</i>	<i>44.3</i>	<i>337.0</i>
<i>1994—</i>												
October	15.0	2.8	17.8	18.4	15.1	33.5	71.6	13.6	85.2	95.6	16.9	112.5
November	11.3	2.6	13.9	14.2	14.2	28.4	68.7	13.2	81.9	92.4	17.2	109.6
December	12.6	2.6	15.2	17.1	15.0	32.2	73.2	13.6	86.8	99.8	17.9	117.7
<i>December quarter 1994</i>	<i>38.9</i>	<i>8.0</i>	<i>47.0</i>	<i>49.7</i>	<i>44.3</i>	<i>94.0</i>	<i>213.5</i>	<i>40.4</i>	<i>253.9</i>	<i>287.8</i>	<i>52.0</i>	<i>339.8</i>
SITE OCCUPANCY RATES (per cent) (a)												
<i>December quarter 1993</i>	<i>n.p.</i>	<i>n.p.</i>	<i>20.7</i>	<i>19.9</i>	<i>30.8</i>	<i>23.7</i>	<i>50.6</i>	<i>38.4</i>	<i>48.1</i>	<i>50.1</i>	<i>38.6</i>	<i>48.2</i>
<i>1994—</i>												
October	22.5	21.6	22.3	21.4	29.9	24.5	51.9	36.4	48.6	50.4	35.0	47.3
November	17.6	20.3	18.0	17.1	29.0	21.5	51.4	36.5	48.2	50.3	36.9	47.6
December	18.9	20.0	19.1	20.0	29.7	23.6	53.0	36.4	49.5	52.6	37.2	49.5
<i>December quarter 1994</i>	<i>19.7</i>	<i>20.7</i>	<i>19.8</i>	<i>19.5</i>	<i>29.5</i>	<i>23.2</i>	<i>52.1</i>	<i>36.4</i>	<i>48.8</i>	<i>51.1</i>	<i>36.4</i>	<i>48.1</i>
TAKINGS FROM ACCOMMODATION (\$'000)												
<i>December quarter 1993</i>	<i>n.p.</i>	<i>n.p.</i>	<i>783</i>	<i>690</i>	<i>452</i>	<i>1,141</i>	<i>1,170</i>	<i>338</i>	<i>1,509</i>	<i>1,220</i>	<i>413</i>	<i>1,633</i>
<i>1994—</i>												
October	259	35	294	260	169	430	443	124	567	383	171	554
November	175	29	204	173	152	325	354	121	474	346	172	518
December	219	29	248	257	187	443	519	122	641	502	183	685
<i>December quarter 1994</i>	<i>653</i>	<i>93</i>	<i>746</i>	<i>690</i>	<i>508</i>	<i>1,198</i>	<i>1,315</i>	<i>367</i>	<i>1,682</i>	<i>1,231</i>	<i>525</i>	<i>1,757</i>

TABLE 10—CARAVAN PARKS BY STATISTICAL DIVISION, VICTORIA—continued

Particulars	Ovens-Murray (SD)			East Gippsland (SD)			Gippsland (SD)			Victoria		
	Short-term	Long-term	Total	Short-term	Long-term	Total	Short-term	Long-term	Total	Short-term	Long-term	Total
ESTABLISHMENTS, CAPACITY AND EMPLOYMENT												
<i>December quarter 1993—</i>												
Establishments	40	8	48	65	10	75	52	15	67	442	159	601
Capacity												
On-site vans	n.p.	n.p.	294	336	77	413	244	135	379	2,046	1,913	3,959
Other powered sites	n.p.	n.p.	3,560	3,226	526	3,752	3,899	938	4,837	36,246	8,689	44,935
Unpowered sites	n.p.	n.p.	1,530	1,578	311	1,889	1,195	229	1,424	13,064	2,066	15,130
Cabins, flats, etc.	n.p.	n.p.	296	320	48	368	114	102	216	2,245	908	3,153
<i>Total capacity</i>	<i>n.p.</i>	<i>n.p.</i>	<i>5,680</i>	<i>5,460</i>	<i>962</i>	<i>6,422</i>	<i>5,452</i>	<i>1,404</i>	<i>6,856</i>	<i>53,601</i>	<i>13,576</i>	<i>67,177</i>
Sites occupied by long-term guests	n.p.	n.p.	302	215	150	365	111	351	462	1,854	4,637	6,491
Other sites permanently reserved (a)	n.p.	n.p.	876	991	45	1,036	2,159	34	2,193	14,425	405	14,830
Employment (persons)	n.p.	n.p.	124	226	28	254	156	36	192	1,487	510	1,997
<i>December quarter 1994—</i>												
Establishments	40	8	48	68	7	75	50	16	66	436	164	600
Capacity												
On-site vans	236	70	306	386	46	432	221	149	370	2,075	1,904	3,979
Other powered sites	3,082	449	3,531	3,381	344	3,725	3,819	976	4,795	36,263	8,618	44,881
Unpowered sites	1,603	78	1,681	1,628	157	1,785	1,102	234	1,336	12,680	2,172	14,852
Cabins, flats, etc.	275	46	321	328	33	361	136	116	252	2,359	1,142	3,501
<i>Total capacity</i>	<i>5,196</i>	<i>643</i>	<i>5,839</i>	<i>5,723</i>	<i>580</i>	<i>6,303</i>	<i>5,278</i>	<i>1,475</i>	<i>6,753</i>	<i>53,377</i>	<i>13,836</i>	<i>67,213</i>
Sites occupied by long-term guests	110	182	292	252	99	351	94	387	481	1,716	4,750	6,466
Other sites permanently reserved (a)	935	47	982	1,093	22	1,115	2,247	29	2,276	14,850	340	15,190
Employment (persons)	110	15	125	229	21	250	155	35	190	1,477	512	1,989
SITE NIGHTS OCCUPIED ('000) (a)												
<i>December quarter 1993</i>												
	<i>n.p.</i>	<i>n.p.</i>	<i>142.7</i>	<i>158.1</i>	<i>24.0</i>	<i>182.1</i>	<i>239.4</i>	<i>38.0</i>	<i>277.4</i>	<i>1,899.3</i>	<i>550.4</i>	<i>2,449.8</i>
<i>1994—</i>												
October	42.6	8.5	51.0	53.3	4.6	57.8	77.2	13.6	90.8	610.1	188.1	798.2
November	39.9	8.3	48.2	51.1	4.3	55.3	75.7	13.5	89.2	596.8	184.1	780.9
December	51.3	8.5	59.8	69.7	4.7	74.4	89.2	14.0	103.2	739.8	192.7	932.5
<i>December quarter 1994</i>	<i>133.7</i>	<i>25.3</i>	<i>159.0</i>	<i>174.0</i>	<i>13.5</i>	<i>187.5</i>	<i>242.0</i>	<i>41.2</i>	<i>283.2</i>	<i>1,946.8</i>	<i>564.9</i>	<i>2,511.7</i>
SITE OCCUPANCY RATES (per cent) (a)												
<i>December quarter 1993</i>												
	<i>n.p.</i>	<i>n.p.</i>	<i>28.2</i>	<i>31.5</i>	<i>27.2</i>	<i>30.8</i>	<i>47.7</i>	<i>29.4</i>	<i>44.0</i>	<i>38.7</i>	<i>44.1</i>	<i>39.8</i>
<i>1994—</i>												
October	26.4	42.4	28.2	30.0	25.3	29.6	47.2	29.8	43.4	36.9	43.9	38.3
November	25.6	43.1	27.5	29.7	24.5	29.3	47.8	30.6	44.0	37.3	44.3	38.7
December	31.8	42.6	33.0	39.3	26.1	38.1	54.5	30.7	49.3	44.7	44.9	44.8
<i>December quarter 1994</i>	<i>28.0</i>	<i>42.7</i>	<i>29.6</i>	<i>33.0</i>	<i>25.3</i>	<i>32.3</i>	<i>49.8</i>	<i>30.4</i>	<i>45.6</i>	<i>39.6</i>	<i>44.4</i>	<i>40.6</i>
TAKINGS FROM ACCOMMODATION (\$'000)												
<i>December quarter 1993</i>												
	<i>n.p.</i>	<i>n.p.</i>	<i>1,092</i>	<i>1,260</i>	<i>264</i>	<i>1,524</i>	<i>1,171</i>	<i>294</i>	<i>1,465</i>	<i>13,469</i>	<i>5,628</i>	<i>19,096</i>
<i>1994—</i>												
October	303	64	367	386	42	428	429	104	533	4,650	1,987	6,638
November	280	59	339	347	37	385	369	102	470	4,009	1,914	5,924
December	449	67	517	655	57	712	589	107	696	5,843	2,104	7,947
<i>December quarter 1994</i>	<i>1,032</i>	<i>190</i>	<i>1,223</i>	<i>1,389</i>	<i>136</i>	<i>1,525</i>	<i>1,387</i>	<i>312</i>	<i>1,699</i>	<i>14,503</i>	<i>6,006</i>	<i>20,509</i>

(a) See Explanatory Notes 11 and 14.

TABLE 11—VISITOR HOSTELS BY STATISTICAL DIVISION, VICTORIA

Particulars	Melbourne (SD)	Central Highlands (SD)	Goulburn (SD)	Wimmera and Ovens-Murray (SDs)	Balance of State	Total Victoria
ESTABLISHMENTS, CAPACITY AND EMPLOYMENT						
<i>December quarter 1993—</i>						
Establishments	15	3	5	7	15	45
Bed spaces	1,238	109	183	567	479	2,576
Employment (persons)	66	9	8	29	38	150
<i>December quarter 1994</i>						
Establishments	16	4	5	10	16	51
Bed spaces	1,302	189	183	649	502	2,825
Employment (persons)	66	14	6	33	41	160
GUEST NIGHTS						
<i>December quarter 1993</i>	66,085	1,265	1,048	12,697	11,624	92,719
<i>1994</i>						
October	21,465	1,550	327	4,489	3,489	31,320
November	24,093	1,445	352	3,870	4,947	34,707
December	27,164	579	406	4,341	4,420	36,910
<i>December quarter 1994</i>	72,722	3,574	1,085	12,700	12,856	102,937
BED OCCUPANCY RATES (per cent)						
<i>December quarter 1993</i>	58.0	12.6	6.2	24.3	26.4	39.1
<i>1994—</i>						
October	53.2	26.5	5.8	22.3	22.4	35.8
November	61.7	25.5	6.4	19.9	32.8	41.0
December	67.3	9.9	7.2	21.6	28.4	42.1
<i>December quarter 1994</i>	60.7	20.6	6.4	21.3	27.8	39.6
GUEST ARRIVALS						
<i>December quarter 1993</i>	24,301	890	470	4,744	6,308	36,713
<i>1994</i>						
October	8,386	742	135	2,247	2,065	13,575
November	9,520	708	155	1,668	2,623	14,674
December	10,252	362	203	1,537	2,664	15,018
<i>December quarter 1994</i>	28,158	1,812	493	5,452	7,352	43,267
AVERAGE LENGTH OF STAY (days)						
<i>December quarter 1993</i>	2.7	1.4	2.2	2.7	1.8	2.5
<i>1994—</i>						
October	2.6	2.1	2.4	2.0	1.7	2.3
November	2.5	2.0	2.3	2.3	1.9	2.4
December	2.6	1.6	2.0	2.8	1.7	2.5
<i>December quarter 1994</i>	2.6	2.0	2.2	2.3	1.7	2.4
TAKINGS FROM ACCOMMODATION (\$'000)						
<i>December quarter 1993</i>	866	9	18	95	156	1,144
<i>1994—</i>						
October	279	18	4	46	45	393
November	325	17	8	35	64	449
December	347	8	5	55	53	468
<i>December quarter 1994</i>	951	43	17	136	163	1,310

EXPLANATORY NOTES

INTRODUCTION

1 This publication contains data for Victoria from a quarterly survey of tourist accommodation establishments. The period covered by the latest survey is the 3 months ended 31 December 1994.

SCOPE

2 Tourist accommodation establishments currently included in the survey comprise two groups:

- Establishments which provide predominantly short-term accommodation (i.e. for periods of less than 2 months) to the general public. These include:

Hotels, motels and guest houses, with facilities being hotels licensed to operate a public bar and motels, private hotels and guest houses all of which provide a bath (or shower) and toilet in most guest rooms and have breakfast available for guests.

NOTE: From December quarter 1993, hotel, motel and guest house establishments with fewer than five rooms have been formally excluded from the scope of this statistical collection. This change in scope resulted in the exclusion of 23 establishments which in the September quarter 1993 Survey aggregates for Victoria represented 2.2 per cent of hotel, motel and guest house establishments but accounted for only 0.2 per cent of accommodation capacity and less than 0.1 per cent of occupancy and takings.

Holiday flats, units and houses (excluding establishments predominantly operated on a time share basis) which are operated by owners or managers who have sole letting rights to at least five flats, units or houses or by real estate agents for short-term letting. They are mainly self-contained in terms of cooking, bath (or shower) and toilet facilities and do not have breakfast available for guests. Data for holiday flats, units and houses include short-term owner occupation as well as paying guest occupation.

Visitor hostels which provide accommodation to visitors on a bed basis (rather than by the room). This category does not include establishments providing charity type accommodation (e.g. Salvation Army hostels) nor hotels, motels and guest houses without in-room facilities which provide accommodation on a per room basis.

- *Caravan parks* which provide either predominantly short-term (i.e. for periods of less than 2 months) or predominantly long-term (i.e. for periods of 2 months or more) accommodation to the general public and which provide powered sites for caravans and toilet, shower and laundry facilities for guests.

3 Data collected and published for each type of establishment (other than holiday flats, units and houses) include both long-term and short-term guests at these establishments.

4 Establishments which provide more than one type of accommodation (e.g. a motel with attached caravan park) are treated as two or more separate establishments. However, self-contained units, flats, cabins, etc. attached to hotels, motels or to caravan parks are included in the capacity for those establishments and not treated as separate holiday flat, unit or house establishments.

DEFINITIONS

5 *Number of establishments.* For hotels, motels and guest houses, caravan parks and visitor hostels, the number of establishments within the scope of the survey which operated for any part of the survey period, or which closed temporarily for the quarter for seasonal reasons.

6 *Number of letting entities.* For holiday flats, units and houses, the number of owners, managers or real estate agents within the scope of the survey who operated for any part of the survey period.

7 Capacity in terms of *Guest rooms, Bed spaces, Holiday units* or *Caravan park sites, etc.* is the maximum number available to accommodate paying guests during the survey period. Capacity closed temporarily for seasonal reasons is included.

8 *Bed spaces.* Three-quarter beds are counted as one bed space; double beds as two bed spaces. Cots are excluded.

EXPLANATORY NOTES —continued

 DEFINITIONS —continued

9 *Total caravan park capacity* comprises *On-site vans*, *Other powered sites*, *Unpowered sites* and *Cabins*, etc.

10 *Room nights available*. The number of guest rooms available multiplied by the number of days for which they were available during the survey period. Includes operating periods only for establishments closing (other than for seasonal reasons) or opening during the survey period.

11 Occupancy in terms of *Room nights*, *Unit nights* or *Site nights occupied* refers to the total number of nights each guest room, holiday unit or caravan park site, etc. was occupied during the survey period.

NOTE: From September quarter 1988, caravan park sites, etc. permanently reserved for 2 months or more at the end of the survey period but only casually occupied by their tenants have been recorded continuously as *Site nights occupied* irrespective of whether the tenants of individual sites were in residence on any particular night. (See also paragraph 14 below). Previously, usage of these sites was recorded as *Site nights occupied* only when their tenants were in the park. Total site occupancy rates from September quarter 1988 are therefore not comparable with those from previous quarters.

12 Occupancy in terms of *Guest nights* refers to the total number of nights each paying guest stayed during the survey period.

13 *Sites occupied by long-term guests*. The total number of sites, etc. occupied at the end of the survey period by guests who have stayed continuously for 2 months or more.

14 *Other sites permanently reserved*. The total number of powered and unpowered sites, on-site vans and cabins, etc. continuously let for 2 months or more by the end of the survey period to tenants who occupy the sites only on a casual or sporadic basis. Separate data for this item are available only from September quarter 1992.

15 *Occupancy rates* represent occupancy expressed as a percentage of total capacity available during the survey period — c.g.

$$\text{Room occupancy rate (\%)} \text{ for the period} = \frac{\text{Room nights occupied}}{(\text{Guest rooms}) \times (\text{No. of days in the period})} \times 100$$

providing that, for establishments closing (other than for seasonal reasons) or opening during the period, the denominator of the above expression includes only operating periods.

16 *Guest arrivals*. The total number of paying guests counted only on the first night they stayed at the accommodation establishment.

17 *Unit lettings*. The total number of times a holiday flat, unit or house was occupied by a new tenant, counted only on the first night it was occupied by the new tenant.

18 *Average length of stay* is expressed in number of days and calculated:

- for hotels, motels and guest houses and for visitor hostels, by dividing *Guest nights* by *Guest arrivals* and
- for holiday flats, units and houses, by dividing *Unit nights occupied* by *Unit lettings*.

19 *Takings from accommodation*. Revenue received from the provision of accommodation. Takings from meals are excluded. Takings from accommodation for each month generally represent the takings received during that month. Where payments are received in advance of, or after, the provision of accommodation to guests, the monthly figure for takings from accommodation may not necessarily bear a direct relationship to the number of guests accommodated during the month. Rental and storage fees paid to caravan parks for the keeping of private vans in parks are included in the takings of the month they are received.

EXPLANATORY NOTES—continued

DEFINITIONS—continued

20 *Star grading.* The grading of hotels and motels with facilities based on the classification system used by members of the Australian Automobile Association (AAA). The gradings are allocated according to a points system based on the amenities and facilities available to guests. Details of the grading scheme are contained in the RACV-RAASA members' publication *Accommodation Australia*, or the individual tour guides produced by members of the AAA. For the purpose of classifying establishments to a star grading in this publication, 'half' star gradings are ignored (e.g. a two and a half star grading has been shown as two star).

21 *Employment.* The number of persons working at accommodation establishments at the end of the survey period (including working proprietors and those working on other than accommodation activities).

AUSTRALIAN STANDARD
GEOGRAPHICAL
CLASSIFICATION

22 Statistics presented in this publication have been classified according to the Australian Standard Geographical Classification (ASGC), Edition 2.4. This classification incorporates a number of hierarchic structures of geographic areas. The appropriate spatial units of the main structure of the ASGC used in this publication are defined as follows.

Statistical Local Areas (SLAs) are in most cases either identical with, or have been aggregated to, the previously published whole or part legal Local Government Areas (LGAs) comprising boroughs (B), cities (C), municipalities (M), rural cities (RC), shires (S) and towns (T). In aggregate, SLAs cover the whole of the State without gaps or overlaps. In some cases, legal LGAs overlap Statistical Division or Subdivision boundaries and therefore comprise two SLAs (e.g. Part A and Part B).

Statistical Subdivisions (SSDs). These consist of one or more SLAs and form the intermediate size spatial unit for the presentation of regional data.

Statistical Divisions (SDs). These consist of one or more SSDs. Where SSDs are not shown for statistical purposes, statistical local areas are shown ordered alphabetically within statistical divisions. The Divisions are designed to be relatively homogeneous regions characterised by identifiable social and economic units within the region, under the unifying influence of one or more major towns or cities.

Statistical Districts. To provide comparable statistics over a period of time, Statistical Districts have been defined around selected urban centres, with a population of 25,000 or more, experiencing urban growth beyond the legal local government area boundaries. Those districts are intended to contain the anticipated urban spread over the next 20 years.

NOTE: As from 1 July 1994, substantial changes have been made to Local Government Area boundaries in the Statistical Divisions of Barwon, Central Highlands and Loddon-Campaspe respectively. While the geographic boundaries of the Statistical Divisions are unchanged, the changes as they affect Statistical Subdivisions, Local Government Areas and Statistical Local Areas are substantial and are detailed on pages 30 to 31.

UNPUBLISHED STATISTICS

23 The ABS may make available on request certain unpublished tourist accommodation statistics. A charge may be made for this information.

RELATED PUBLICATIONS

24 Publications for Australia, and each State and Territory, are released by the respective offices of the ABS. Tourist accommodation statistics for past quarters are available on request.

25 Other ABS publications which may be of interest include:

Directory of Tourism Statistics (1130.0) (irregular; first and latest issue: 1991)

Overseas Arrivals and Departures, Australia (3401.0) (monthly)

Tourism Indicators Australia (8634.0) (quarterly)

Tourist Accommodation, Australia (8635.0) (quarterly)

26 Current publications produced by the ABS are listed in the *Catalogue of Publications and Products* (1101.0). The ABS also issues the *Publications Advice* (1105.0) on Tuesdays and Fridays which lists publications to be released in the next few days. Both the *Catalogue* and *Publications Advice* are available from any ABS office.

EXPLANATORY NOTES - *continued*

SYMBOLS AND OTHER USAGES	n.a.	not available
	n.p.	not available for publication but included in totals where applicable
	r	figure or series revised since previous issue
	..	not applicable
	---	nil or rounded to zero
	(B)	Borough
	(C)	City
	(RC)	Rural City
	(S)	Shire
	(T)	Town

27 Where figures have been rounded, discrepancies may occur between totals and the sums of the component items.

ELECTRONIC SERVICES

DISCOVERY	Key *656# for selected current economic, social and demographic statistics.
PC-TELESTATS	This service delivers major economic indicator publications ready to download to your computer on the day of release. Phone (06) 252 5408.
PC-AUSSTATS	Thousands of up-to-date time series are available on this ABS on-line service. For further information, phone (03) 615 7769.
CDATA91	CDATA91 is a CD-ROM (COMPACT DISC - READ ONLY MEMORY) product which allows desktop analysis of 1991 Census Data for small areas. CDATA91 enables users to select data and geographic areas and view this information as tables, maps or graphs and link this census information with other data.

For further information regarding CDATA91, phone (03) 615 7769.

RECORDED MESSAGE SERVICES

0055 86400	<i>Consumer Price Index</i>
	<i>National Accounts</i>
	<i>Balance of Payments</i>
	<i>Labour Force Estimates</i>
	<i>Average Weekly Earnings</i>
	<i>Estimated Resident Population</i>

STUART JACKSON
Deputy Commonwealth Statistician

CHANGES TO GEOGRAPHIC BOUNDARIES, VICTORIA (Effective 1 July 1994)

The Australian Standard Geographical Classification (ASGC) Edition 2.4, effective from 1 July 1994, reflects substantial changes made to Local Government Area (LGA) boundaries in the Statistical Divisions of Barwon, Central Highlands and Loddon-Campaspe respectively. The changes include amalgamations, boundary changes and creations of new LGAs. While the geographic boundaries of the Statistical Divisions are unchanged, the changes as they affect Statistical Subdivisions, Local Government Areas and Statistical Local Areas are detailed below.

Statistical Divisions/Subdivisions (Component areas from 1 July 1994)

Composition in terms of previous statistical regions

Barwon (SD)

Greater Geelong City Part A (SSD)

Bellarine - Inner	Bellarine (RC) - Pt A
Corio - Inner	Bannockburn (S) - Pt A and Corio (S) - Pt A
Geelong	Geelong (C)
Geelong West	Geelong West (C)
Newtown	Newtown (C)
South Barwon - Inner	Barrabool (S) - Pt A, a minor part of Barrabool (S) - Pt B, South Barwon (C) - Pt A and a minor part of South Barwon (C) - Pt B

East Barwon (SSD)

Greater Geelong (C) - Pt B	Bellarine (RC) - Pt B and part of South Barwon (C) - Pt B
Queenscliffe (B)	No change
Surf Coast (S) - Pt A	The major part of Barrabool (S) - Pt B and part of South Barwon (C) - Pt B

West Barwon (SSD)

Colac (C)	No change
Colac (S)	Colac (S) and part of Winchelsea (S)
Greater Geelong (C) - Pt C	Corio (S) - Pt B
Otway (S)	No change
Southern Rural (S) - Central	Leigh (S)
Southern Rural (S) - East	Bannockburn (S) - Pt B
Surf Coast (S) - Pt B	Part of Winchelsea (S)

Central Highlands (SD)

Ballarat City (SSD)

Ballarat (C) - Central	Ballaarat (C)
Ballarat (C) - Inner North	Ballarat (S) - Pt A, part of Bungaree (S) - Pt A, a small part of Buninyong (S) - Pt A and a minor part of Ripon (S)
Ballarat (C) - North	Ballarat (S) - Pt B
Ballarat (C) - South	Sebastopol (B) and parts of Buninyong (S) - Pts A and B and part of Grenville (S) - Pt A

East Central Highlands (SSD)

Bacchus Marsh (S)	No change
Creswick (S)	No change
Daylesford & Glenlyon (S)	No change
Moorabool (S) - East	Ballan (S)
Moorabool (S) - West	Bungaree (S) - Pt B, part of Bungaree (S) - Pt A and parts of Buninyong (S) - Pts A and B

CHANGES TO GEOGRAPHIC BOUNDARIES, VICTORIA (Effective 1 July 1994) —continued

Statistical Divisions/Subdivisions
(Component areas from 1 July 1994)

Composition in terms of previous statistical regions

West Central Highlands (SSD)

Ararat (C)	No change
Ararat (S)	No change
Avoca (S)	No change
Lexton (S)	No change
Ripon (S)	The major part of Ripon (S)
Southern Rural (S) - West	Grenville (S) - Pt B , part of Grenville (S) - Pt A and parts of Buminyong (S) - Pts A and B
Talbot & Clunes (S)	No change

Loddon-Campaspe (SD)

Greater Bendigo City Part A (SSD)

Eaglehawk	Eaglehawk (B)
Greater Bendigo (C) - Central	Bendigo (C)
Huntly - Inner	Huntly (S) - Pt A
Marong - Inner	Marong (RC) - Pt A
Strathfieldsaye - Inner	Strathfieldsaye (S) - Pt A

Northern Loddon-Campaspe (SSD)

No change

Central Loddon-Campaspe (SSD)

Bet Bet (S)	No change
Castlemaine (S)	No change
Greater Bendigo (C) - Huntly Bal	Huntly (S) - Pt B
Greater Bendigo (C) - Marong Bal	Marong (RC) - Pt B
Greater Bendigo (C) - S'saye Bal	Strathfieldsaye (S) - Pt B
McIvor (S)	No change
Maldon (S)	No change
Maryborough (C)	No change
Metcalfe (S)	No change
Newstead (S)	No change
Tullaroop (S)	No change

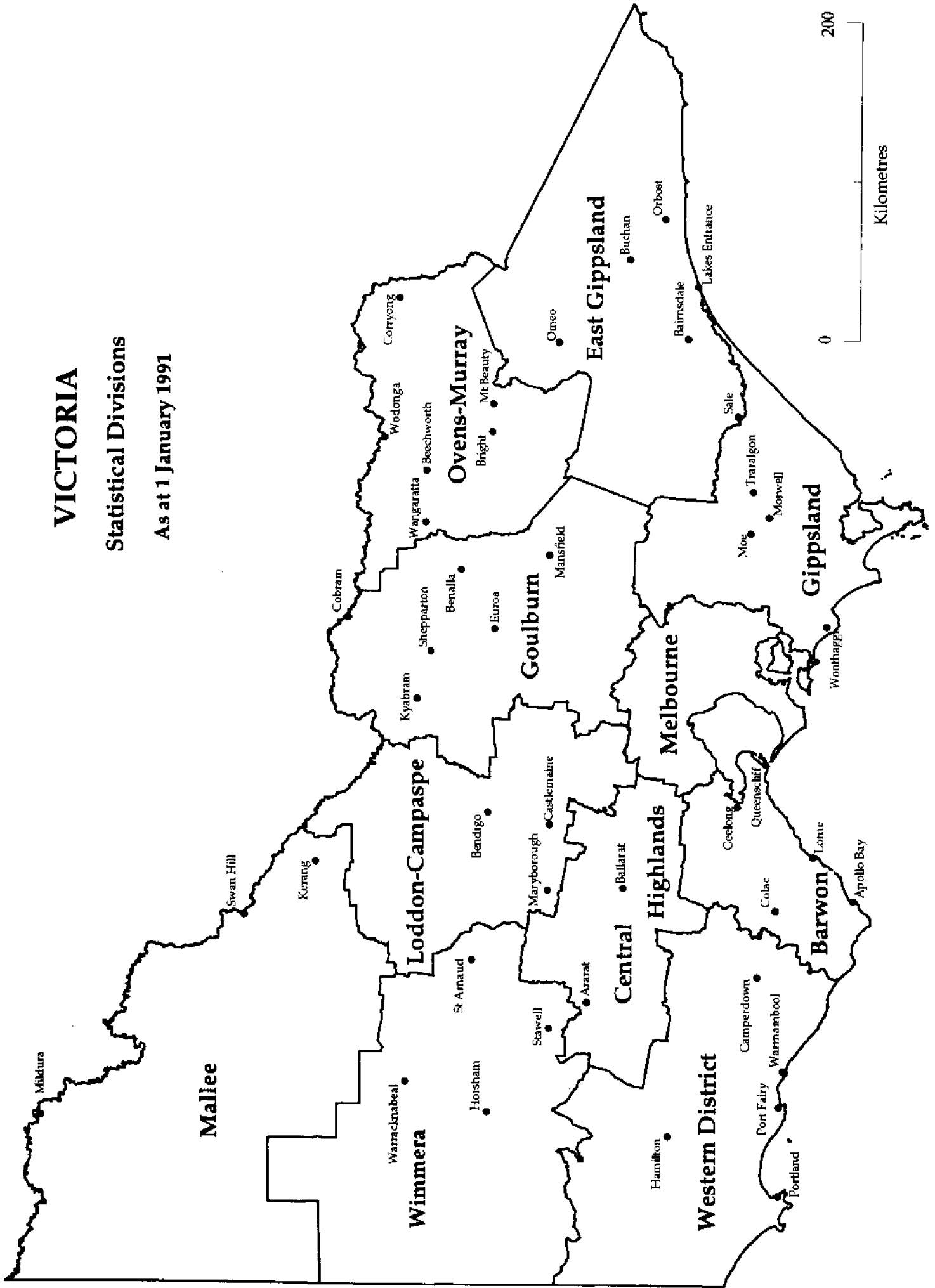
South Loddon-Campaspe (SSD)

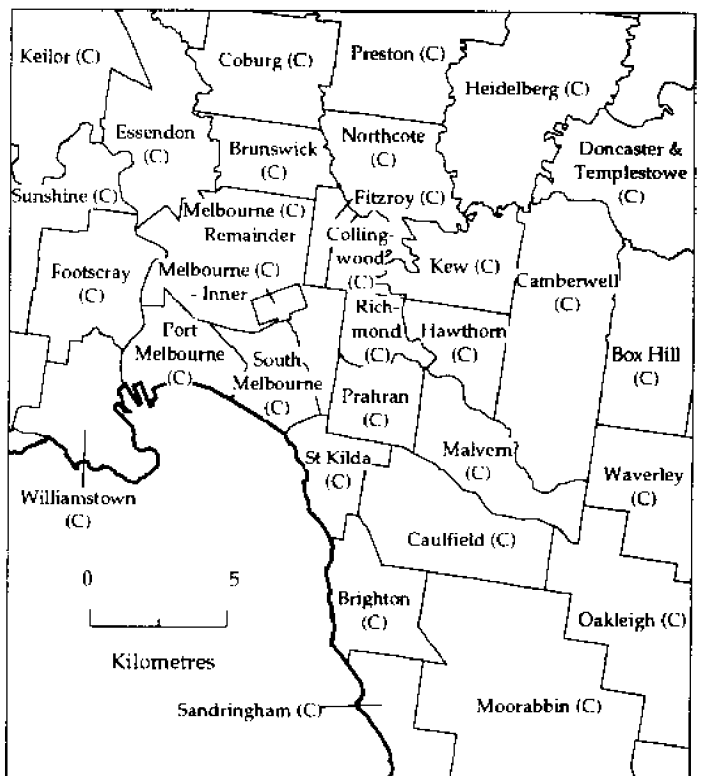
No change

VICTORIA

Statistical Divisions

As at 1 January 1991





MELBOURNE STATISTICAL DIVISION

Statistical Local Areas

As at July 1994 (interim)
City (C), Shire (S)



For more information ...

The ABS publishes a wide range of statistics and other information on Australia's economic and social conditions. Details of what is available in various publications and other products can be found in the *ABS Catalogue of Publications and Products* available at all ABS Offices (see below for contact details).

Information Consultancy Service

Information tailored to special needs of clients can be obtained from the Information Consultancy Service available at ABS Offices (see Information Inquiries below for contact details).

National *Dial-a-Statistic* Line

0055 86 400

(Steadycom P/L - premium rate 25c/21 4 secs.)

This number gives 24-hour access, 365 days a year for a range of statistics.

Electronic Data Services

A large range of data is available via on-line services, diskette, magnetic tape, tape cartridge and CD ROM. For more details about our electronic data services, contact any ABS Office (see below).

Bookshops and Subscriptions

There are over 400 titles of various publications available from ABS bookshops in all ABS Offices (see below Bookshop Sales for contact details). The ABS also provides a subscription service through which nominated publications are provided by mail on a regular basis at no additional cost (telephone Publications Subscription Service toll free on 008 02 0608 Australia wide).

Sales and Inquiries

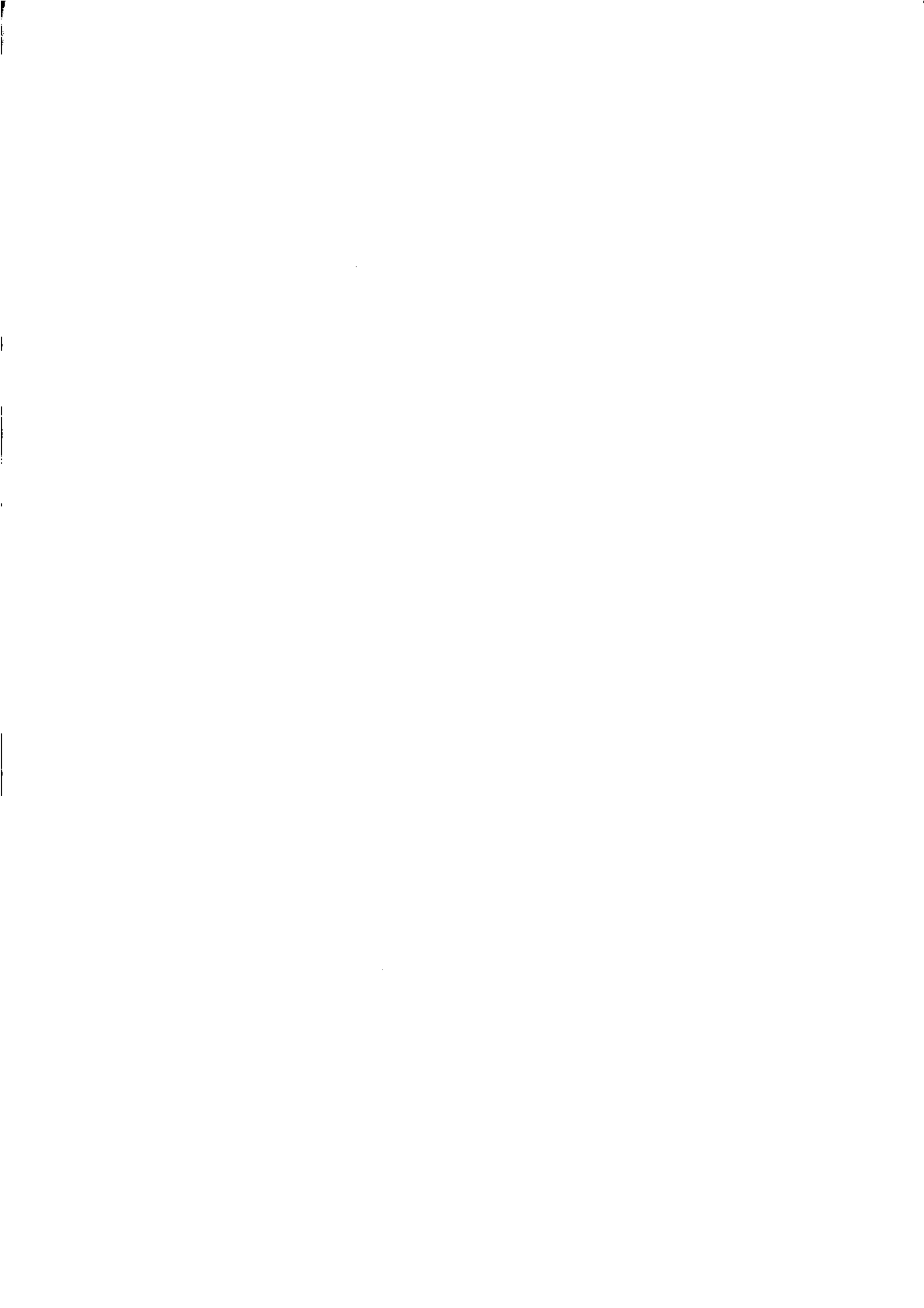
Regional Offices	Information Inquiries	Bookshop Sales
SYDNEY (02)	268 4611	268 4620
MELBOURNE (03)	615 7000	615 7829
BRISBANE (07)	222 6351	222 6350
PERTH (09)	360 5140	360 5307
ADELAIDE (08)	237 7100	237 7582
HOBART (002)	20 5800	20 5800
CANBERRA (06)	207 0326	207 0326
DARWIN (089)	43 2111	43 2111
National Office		
ACT (06)	252 6007	008 020 608

ABS Email Addresses

Keylink	STAT.INFO/ABS
X.400	(C:AU,A:TELMEMO,O:ABS,SN:INFO,FN:STAT)
Internet	STAT.INFO@ABS. TELEMEMO.AU



Information Services, ABS, PO Box 10, Belconnen ACT 2616



© Commonwealth of Australia 1995

Recommended retail price: \$25.00



2863520012940
ISSN 1031-2900